

# MINNESOTA FAMILY PHYSICIAN

Newsletter of the Minnesota Academy of Family Physicians

September/October 2008

## MAFP Declares November as Medical Home Awareness Month

Family physicians across the state are taking notice of the recent legislation passed in the 2008 session about establishing medical homes/health care homes. Is the jargon confusing? Not really sure what that means to you personally or for your clinic? The MAFP is here to make this complex topic simple!

We will be asking you to take one or two really small steps to improve your medical home practice, similar to the way you ask your patients to take small steps to change their lifestyle to lose weight. It's not usually achieved by a massive overhaul, but with small incremental steps.

We ask that you start by reading one or two articles about medical home on the MAFP or AAFP websites; [www.mafp.org](http://www.mafp.org) or [www.aafp.org](http://www.aafp.org) or [www.transforMed.com](http://www.transforMed.com).

Then talk to some of your clinic staff about what they think a medical home is all about. By October, you'll start seeing emails from MAFP outlining two or three small steps to take in November. Be sure @mafpa.org is on your approved email list!



## 2008 National Conference of Family Medicine Residents and Medical Students - Global Health

By Lisa Regehr, MAFP Conference Coordinator

Global Health was the focus of the 2008 National Conference of Family Medicine Residents and Medical Students, held July 30th - August 2nd, in Kansas City.



Minnesota medical students take part in the Student Congress

Richard Roberts, M.D., President-elect of the World Organization of Family Doctors presented the opening address. Attendees also heard from Gary Morsch, M.D., President of Heart to Heart International, a relief and development organization specializing in volunteer action and worldwide humanitarian assistance. He is also founder of Docs Who Care which provides staffing to rural hospitals and clinics in seven states.

Students took part in workshops, procedural skills courses and visited the exhibit hall to explore residency options.

"Attending the National Conference was a wonderful opportunity for me to network with students and professionals that are as passionate about Family Medicine as I am," said Genevieve

Werner, a 3<sup>rd</sup> Year Medical Student at Mayo Medical School. "I especially enjoyed the focus on Global Health this year and meeting family physicians who have successfully built practices that serve the global community."

Local chapters of the MAFP and the University of Minnesota Department of Family Medicine & Community Health provided scholarships for 22 Minnesota medical students to attend the conference.

National Conference - Continued on page 4

### INSIDE

- ▶ Nominate A Colleague For An Award Page 4
- ▶ Resident and Student Director Reports Page 6
- ▶ 2009 Winter Conference Page 7
- ▶ MAFP Annual Report Pages 8-9

### REGULAR FEATURES

- ▶ President's Message Page 3
- ▶ What's New Page 4
- ▶ Membership Report Page 5
- ▶ Bulletin Board Page 7
- ▶ Foundation Report Page 10
- ▶ Practice Opportunities Page 11 - 15



# Coming Up

## The Calendar

October 24                   AAFP Live! Minneapolis, MN  
October 25                   MAFP Board of Directors Meeting, St. Louis Park, MN  
November 27-28           Thanksgiving, MAFP Office Closed

## Continuing Education Courses

### Clinical Diabetes Management in PC

Date(s): October 2 - 3, 2008  
Location: Minneapolis, Minnesota  
CME Credit Available: 12.5 Prescribed  
Provider: Park Nicollet Clinic  
Contact: Angela Youngdahl (952) 993-2721 [youngar@parknicollet.com](mailto:youngar@parknicollet.com)  
Information: [www.parknicollet.com/diabetes/](http://www.parknicollet.com/diabetes/)

### Nicotine Dependence: Why People Use Tobacco

Date(s): Friday, October 3, 2008  
Location: Duluth, Minnesota  
CME Credit Available: 3.00 Prescribed  
Provider: St Marys/Duluth Clinic  
Contact: Diane Torvick (218) 786-3838  
[dtorvick@smdc.org](mailto:dtorvick@smdc.org)  
Information: <http://www.smdc.org/classes>

### Twin Cities Sports Medicine Conference

Date(s): Friday, October 3 - 4, 2008  
Location: Bloomington, Minnesota  
CME Credit Available: 11.25 Prescribed  
Provider: University of Minnesota  
Contact: Michael Lambert (612) 626-7600  
[cme@umn.edu](mailto:cme@umn.edu)  
Information: [www.cme.umn.edu](http://www.cme.umn.edu)

### AAFP Live: Minnesota

Date(s): October 24, 2008  
Location: Minneapolis, Minnesota Hyatt Regency  
CME Credit Available: 12.5 Prescribed  
Provider: American Academy of Family Physicians  
Contact: Nina Carnoali (913) 906-6316  
[ncarnoal@aafp.org](mailto:ncarnoal@aafp.org)  
Information: [www.antidotecme.com](http://www.antidotecme.com)



### High Performance Physician: Preparing for an EMR

Date(s): November 14 - 15, 2008  
Location: Rochester, Minnesota  
CME Credit Available: 14.00 Prescribed  
Provider: High Performance Physician Institute  
Contact: Matthew Ferrante (877) 599-5119 [hpp@highperformancephysician.com](mailto:hpp@highperformancephysician.com)  
Information: <http://highperformancephysician.com>

This issue of *Minnesota Family Physician* is brought to you through the generous support of Twin Cities Orthopedics.



*Minnesota Family Physician* (ISSN 0279-6120) is published by the Minnesota Academy of Family Physicians six times per year. Except for official reports and announcements, no material in *Minnesota Family Physician* is to be construed as representing the policies or views of the Minnesota Academy of Family Physicians. The editors reserve the right to accept or reject any article or advertising matter.

### Medical Editor

David Hutchinson, M.D.

### Managing Editor

Kristie Thorson

### Layout & Design

Kristie Thorson

Editorial copy and practice opportunity ads to be considered for the Nov/Dec. issue are due in the MAFP office by 10/27/08.

### Minnesota Academy of Family Physicians

600 S. Hwy. 169, Suite 1680  
St. Louis Park, Minnesota 55426  
(952) 542-0130 • (800) 999-8198  
Fax: (952) 542-0135  
Email: [office@mafpp.org](mailto:office@mafpp.org) • Website: [www.mafpp.org](http://www.mafpp.org)

## Officers

David Hutchinson M.D.  
- *President*  
Patricia Fontaine, M.D.  
- *President-Elect*  
Alan Olson, M.D.  
- *Board Chair*  
Raymond Christensen, M.D.  
- *Treasurer*  
Mohammad Tariq Fareed, M.D.  
- *Officer-At-Large*  
Terence Cahill, M.D.  
- *Speaker of the House*  
Philip Stoyke, M.D.  
- *Vice Speaker*  
Virginia Barzan, C.A.E.  
- *Executive Vice President*

## Directors

Daron Gersch, M.D.  
- *Central Chapter*  
Karen Karlinski, M.D.  
- *East Metro Chapter*  
Robert Koshnick, Jr., M.D.  
- *Heart of the Lakes Chapter*  
Carol Farchmin, M.D.  
- *Lake Superior Chapter*  
Robert Rutka, M.D.  
- *Lake of the Woods Chapter*  
Alan Olson, M.D.  
- *Minnesota Valley Chapter*  
To Be Determined  
- *Park Region Chapter*  
Phillip Holmes, M.D.  
- *Range Chapter*  
Gregory Angstman, M.D.  
- *Southeast Chapter*  
To Be Determined  
- *Southern Chapter*  
To Be Determined  
- *Southwest Chapter*  
Amy Bonifas, M.D.  
- *West Metro Chapter*  
William Nicholson, M.D.  
- *Resident*  
Elizabeth Menzel  
- *Medical Student*

## Staff

Lynn Balfour  
- *Foundation Executive Director*  
Kelly Bellomy  
- *Membership Coordinator*  
Katherine Carlson  
- *Accountant/Office Coordinator*  
Arlene Lensing  
- *Associate Director*  
Lisa Regehr  
- *Conference Coordinator*  
Kristie Thorson  
- *Communications Coordinator*

The proliferation of hospitalists and hospitalist systems appears to present challenges for our members and our specialty at present. We love 'em, and we're dismayed by 'em. Patient opinions about them seem as diverse – some are alarmed at their implications, some are reassured by the rationales for them. This notwithstanding, hospitalism is a fashion driven primarily by providers at this point. Evidence (absent long term follow-up studies) supports both continuity and hospitalist systems of inpatient care for quality and cost outcomes. In other words, some of us continue to specialize successfully in 'the patient', while others of us are specializing successfully in 'the care setting.' Accomplishing the benefits of each approach simultaneously could be our goal.

Discussions among ourselves about hospitalists generates energy. The subject has shown itself to be a friendly flashpoint issue within the MAFP, reflecting our diversity in circumstance and need. Some of us refer routinely to hospitalists and can't imagine life without them. Some of us have developed or joined hospitalist systems merely to be able to recruit new partners. Some of us are obliged to utilize hospitalist services, but feel marginalized by them in the context of our patients' care. Some believe that this movement reflects our growing tendency to relinquish skills and responsibilities, to our detriment. Some of us rotate hospitalist duties amongst partners for geographic or scheduling efficiency, while maintaining inpatient care skills. Some of us are employed specifically as hospitalists, happy to sub-specialize and loving the freedom of shift work. Some of us serve as chief administrators for hospitalist systems, believing strongly in their value, accommodating medical staff demand for access to such a system. Some members bemoan the model set by ubiquitous hospitalist systems to doctors-in-training, recognizing that it seems to dissuade prospective new partners from believing that they can ever reasonably practice comprehensively. (This must feel really threatening to our rural colleagues!) We're all faced with surfing this tidal wave in some manner, and it matters to us.

The hospitalist movement took root in urban settings where primary physicians, by virtue of distance and busy-ness, were not available enough to the inpatient setting to offer quality, ready care. Clinical business managers then applauded the concept for its financial efficiency, and proliferation of production models of compensation reinforced its potential value to community physicians. The lifestyle appeal of its structure amidst modern provider expectations is further driving the hospitalist system to become the rule rather than the exception. Regardless of one's personal 'druthers', it's a movement with legs. We must accommodate it constructively.

I note three strong personal feelings about hospitalist systems. First, I still want to, and feel that I should, impact the care of my patients in the inpatient setting. Knowing what I do academically, intuitively, and empirically about continuity in primary care, I believe that society remains best served by a health care process which provides inpatient case input (consultative or managerial) by personal physicians. Whether this be by daily, standard routine, by some rotating system where my partners share the privilege, or by some new collaborative and effective model, I want patients to have access to us, and I agree with patients who expect their caregivers and care system to access – always, in some detail, somehow – what we know about them. Patients invest in this knowledge set, and our ability to employ it in their care ascribes unique value to us.

# President's

## Message

By David Hutchinson, M.D.



Second, knowing what I do about integrative generalism in primary care, I believe that experienced family docs make SUPERIOR hospitalists. Our flexibility and breadth, our coordination and communication skills, our ability to multitask, and our relative comfort with patient and system complexity, make us naturals for the role. Several health systems in Minnesota have in fact discovered this, and preferentially seek us for these positions.

Third, and most importantly, I believe that no matter what particular type of hospitalist system we face in our own communities, it should be our prime directive to be sure that those systems contribute to, rather than detract from, quality of care. I've seen examples of each. I've come to view hospitalist systems similarly to how I view retail clinics, now, actually: they're an expression of need within the care system and they're here to stay, but they create damnable obstacles to seamless, coordinated, aware care. We need to embrace them, and we need to make them make us better, not worse. We can do this by rolling them into highly functioning, patient-centered medical homes.

Ensuring patient-centeredness and care quality through hospitalists within a medical home requires consistent communication between care team partners – moreso than efficiency would naturally lead us to employ. The mandate of excellence should direct hospitalists and personal physicians to fully appreciate each others' work around shared patients. This requires that we "talk" to each other, especially upon patient entry and exit. Making hospitalists a well-oiled cog in the medical home also requires patient health records to be kept meticulously updated and annotated, and heeded. We could probably all be better about examining documents from outside the clinic for items that should be added to problem lists, med lists, and follow-up to-do lists. Minimizing the safety risks of 'handoffs' and the accuracy challenges of care partitioning that are inherent to hospitalist systems are poignant challenges for medical homes, now, too. Rotating hospitalist arrangements between primary care partners, and 'nocturnalist' systems (nighttime coverage by hospitalist partners) are examples of hospitalist systems that offer potential for quality, coordinated care by rested providers who are familiar with, accountable to, and connected with each other. Systems like these have the means to accomplish the above goals.

If employed "well," the hospitalist theme is a wonderful example of a patient-centered medical home team care mechanism. I hope that we will all come to recognize those ways in which we can consciously make it a viable and constructive tool for patients, and can then come to commonly view hospitalism as an uncommonly *good* thing.

# What's New

## ► MAFP Members in the Spotlight

**Michael Oldenburg, M.D.**, was featured in the August 18th *Star Tribune* article called "A Healthy Dose of Independence". **Nancy Baker, M.D.**, wrote an article called "Poetic Podcasts" for the July 2008 issue of *Minnesota Medicine*. In the same issue, **Kathie Culhane-Pera, M.D.**, wrote an article about how a child's brief life brought her into the fold of traditional Hmong medicine. **William Shores, M.D.**, and student member, **Nicky Te Poel**, received honorable mentions in a *Minnesota Medicine* writing contest. **Patricia Fontaine, M.D.**, co-authored an article titled "Hypertensive Disorders of Pregnancy" for the July 1st issue of *American Family Physician*. **Troy Hanson, M.D.**, of New Prague, was appointed to the State Advisory Council on Mental Health by Governor Tim Pawlenty. **Arnie Vainio, M.D.**, of Cloquet, was selected to receive the Early Distinguished Career Award by the University of Minnesota Medical Alumni Society. The following members were named as some of *Minnesota Physician's* 100 Influential Health Care Leaders: **Macaran Baird, M.D.**, **Gail Baldwin, M.D.**, **Raymond Christensen, M.D.**, **Allen Horn, M.D.**, **Lois Lenarz, M.D.**, **Mark Matthias, M.D.**, **Dave Renner**, **George Schoephoerster, M.D.**, and **Robert Weber, M.D.**

## Congratulations and best wishes to recent member retirees!

**James Cosgriff, Jr., M.D.**, Olivia, retired in May after 60 years as a family physician in Renville County.

**E. John English, M.D.**, retired this past May after 34 years with the Apple Valley Medical Clinic. He was a founder of the clinic in 1974.

**Gerald Jensen, M.D.**, retired July 31st after 31 years with the Silver Lake Clinic in St. Anthony Village. He plans to spend more time watching his grandkids, golfing, fishing and visiting his vacation home near Brainerd.

**Allan Solum, M.D.**, retired in August after serving 23 years of practice with the Paynesville Area Health Care System. His retirement plans include sailing, golf, tennis, woodworking, catching up on reading and spending time with family.

### Continued from page 1 - National Conference

"The National Conference was a great place to explore the many residency options available for family practice, network with the programs and hear from current residents," said Mark Vukonich, a 2<sup>nd</sup> Year Medical Student at the University of Minnesota Duluth campus.

Seventeen medical students participated in the Student Congress on Saturday, August 2, making their voices heard on family medicine issues. Beth Menzel, the MAFP Student Director, held a caucus earlier that day so students could discuss which resolutions they would vote for - and speak to - at the congress. Menzel and Will Nicholson, M.D., our Resident Director, each brought resolutions on reinstating economic hardship deferment and on Medical Home curriculum to their respective congresses. All of the resolutions passed.

The MAFP was pleased to have Marla DeWitt, M.D., of Allina United Family Medicine Residency Program, represent our state by running for the position of Resident Representative to the Association of Family Medicine Residency Directors.

Sixty medical students, residents, faculty and sponsors attended the Minnesota Reception, a social event for students and residents, at the Crowne Plaza on Friday, August 1. The reception was sponsored by **Allina Hospitals & Clinics**, **Cuyuna Regional Medical Center**, **Fairview**, **HealthPartners**, and **Park Nicollet**.

## Nominate a Colleague for an Award

The MAFP is now accepting nominations for the following awards:

- Family Physician of the Year
- Teacher of the Year
- Researcher of the Year
- Resident of the Year
- Medical Student Award
- Merit Award

For more information and a detailed description of each award, please visit the MAFP website at [www.mafp.org/awards.asp](http://www.mafp.org/awards.asp).

### Nomination Process

All nominations must be made in writing to the MAFP office (mail, fax or e-mail). Include the name of the award, your name and phone number, and explain why the nominee is deserving. Also, if applicable, include the name of the nominee's clinic, residency program or medical school. Additional information may be requested from the nominator or nominee. *Except where noted, candidates must be MAFP members.*

### Deadlines for Submission

Family Physician of the Year: **January 5, 2009**  
All other awards: **February 23, 2009**

# Membership Report

## July 1, 2008 - August 31, 2008

### New Active Members

Randall Card, M.D., *Crosby*  
Panamulla Jayatileka, M.D.,  
*New Prague*  
Paul Kietzmann, M.D.,  
*Alexandria*  
Crystal Dexter, M.D., *Blaine*  
Susan Nordin, M.D., *Duluth*  
Mark Rawson, M.D.,  
*Golden Valley*

### Residents Upgraded to Active Members

Kristel Arcilla, D.O., *Duluth*  
Shazia Aslam, M.D.,  
*Coon Rapids*  
Samuel Bugbee, M.D.,  
*Golden Valley*  
Jason Como, M.D., *Mpls.*  
Sujata Costello, M.D.,  
*Golden Valley*  
Tamara Detert, D.O., *Dundas*  
Ryan Dick, M.D., *Woodbury*  
Julia Gonsoski, M.D.,  
*Inver Grove Heights*  
Lisa Holland, M.D., *St. Paul*  
Jennifer Holmes, M.D.,  
*St. Cloud*  
Adam Hoverman, D.O., *Mpls.*  
Christina Hyser, M.D., *Duluth*  
Robin Javaherian, M.D., *Mpls.*  
Paul Jones, M.D., *Duluth*  
Kalpana Kaapuraala, M.D.,  
*St. Paul*  
Kevin Kampfe, M.D.,  
*Rochester*  
Sean Kempke, M.D., *Duluth*  
Matthew Logan, M.D.,  
*Stillwater*  
Stacy Longnecker, M.D.,  
*St. Paul*  
Subhashini Mahipathi, M.D.,  
*Mpls.*  
Alyas Masih, M.D., *Sartell*  
Marc Matthews, M.D.,  
*Rochester*  
Jaimee McPadden, M.D.,  
*Waconia*  
Maya Miley, M.D.,  
*St. Louis Park*  
Sara Mitlyng, M.D., *Plymouth*  
Ahmed Mohamed, M.D.,  
*St. Cloud*  
Behnaz Movahedi, M.D.,  
*Blaine*  
Keiichiro Narumoto, M.D.,  
*Pittsburgh, PA*

Tony Pelzel, M.D., *St. Paul*  
Theresa Person, M.D., *St. Paul*  
Mark Petry, M.D., *Proctor*  
Ruth Potta, M.D., *Burnsville*  
Brandon Price, D.O., *Rochester*  
Thomas Pulling, M.D., *Mpls.*  
Fayyaz Qadir, M.D.,  
*St. Louis Park*  
Scott Rassbach, D.O., *Mankato*  
Rachel Reuter, M.D.,  
*St. Louis Park*  
Stephanie Reyburn, M.D.,  
*Rochester*  
Claire Saad, M.D., *Ham Lake*  
Erik Sather, M.D., *Duluth*  
Jennifer Scott, D.O.,  
*North Mankato*  
Samir Shah, M.D.,  
*St. Louis Park*  
Alpana Singh, M.D., *Mpls.*  
Laura Skrocki, D.O.,  
*Phoenix, AZ*  
Shana Sniffen, M.D.,  
*Robbinsdale*  
James Sotis, M.D., *Mpls.*  
Daniel Soular, M.D., *Hugo*  
Stephanie Stanton, M.D.,  
*St. Paul*  
David Tapper, M.D., *Hopkins*  
Amanda Tembreull, M.D.,  
*Mpls.*  
Sunn Sunn Thaw, M.D.,  
*St. Paul*  
Matthew Thompson, M.D.,  
*Rochester*  
Amber Vick, M.D.,  
*New London*  
Venkata Vundamati, M.D.,  
*Woodbury*  
Thomas Shin-Chin Wang,  
M.D., *Bloomington*  
Yer Xiong, M.D., *St. Paul*  
Peter Yawn, M.D.,  
*Columbia Heights*

### New Resident Members

*Duluth Family Medicine Residency*  
Shannon Bradley, M.D.  
Kimberly Campbell, M.D.  
Matthew Czechowicz, M.D.  
Devon Dannen, M.D.  
Matthew Horning, M.D.  
Nathan Laposky, M.D.  
Addie Licari, M.D.  
Jordan Moe, M.D.  
Andrew Snider, M.D.  
Benjamin Turner, M.D.



### Hennepin Co. Medical Center

Ayman Abdelhalim, M.D.  
Luna Asrar, M.D.  
Won Suk Choi, M.D.  
Olumide Omiwade, M.D.  
Sabana Pathan, M.D.  
Pragnesh Kumar Radadiya, M.D.  
Vithya Subramaniam, M.D.

### Mayo Family Medicine

Ana Caro, M.D.  
Amanda Lovold, D.O.  
Ryan Ludwig, M.D.  
Andi Lynch, D.O.  
Shawn McManus, D.O.  
Sara Oberhelman, M.D.  
John Robertson, M.D.  
Joseph Rybar, M.D.

### United Family Medicine

Sarah Carlson, M.D.  
Katherine Diaz, M.D.  
Amanda Goertz, M.D.  
Ramsey Peterson, M.D.  
Lisa Phifer, M.D.  
Amy Schneider de Cortez, M.D.

### University of MN Family Medicine & Community Health Programs

### Fairview Smiley's Clinic

Sandeep Kalola, M.D.  
Sankari Kasi, M.D.  
Nadia Malik, M.D.  
Frank Melo, M.D.  
Rabin Nikjoo, M.D.  
Parvathi Theerhakarai, M.D.

### Mankato Family Medicine

Jamie Johannes, D.O.  
Kara Nelson, M.D.  
Tammy Jo Olson, D.O.  
Alexander Stricker III, M.D.  
Katie Thompson, D.O.

### Methodist Hospital

Daniel Dahl, M.D.  
David Delaney Elsner, D.O.  
Julie Farias, M.D.  
Robyn Knutson Bueling, M.D.  
Natalie Roeser, M.D.  
Ryan Williams, D.O.

### North Memorial Health Care

Scott Bender, M.D.  
Subhadra Chereddy, M.D.  
Matthew Hall, M.D.  
Erik Haugland, M.D.  
Joseph Kalugdan, M.D.  
Shanda Lawson, M.D.  
Holly Stenzel Taynton, D.O.  
Khannia Thomas, M.D.  
Sara Whitehouse, M.D.  
Lindsay Zeichner, M.D.

### St. Cloud Hospital

Priscilla George, M.D.  
Stephanie Hemmer, D.O.  
Melissa Keller, M.D.  
Camille Lang, M.D.

### St. John's Hospital

Nathan Brever, M.D.  
Preston Hatlestad, M.D.  
Abigail Miller, M.D.  
Amaris Moore, M.D.  
Brett Salek, M.D.  
Libby Wagner, M.D.

### St. Joseph's Hospital

Kashiff Khan, M.D.  
Patrick Knoedler, M.D.  
Sarah Masrud, M.D.  
Mai Moua, M.D.  
Ganesh Pawar, M.D.  
Stefan Pomrenke, M.D.  
Dawn Schreifels, M.D.  
Tajinder Singh, M.D.

### In Memoriam

Nancy English, M.D., *Duluth*  
Member Since 1995  
Served as Delegate to Lake Superior Chapter

### MAFP Membership

(As of 8/31/08)

Actives = 2,167  
Residents = 233  
Students = 321  
Life = 244  
Inactives = 42  
Supporting = 3  
**Total = 3,010**

## MAFP Resident Director Report

This year started out with a bang for the MAFP Residents! At the AAFP Resident and Student National Convention, the Minnesota Delegation pushed through resolutions strongly urging the AAFP to take urgent and decisive action on two critical national issues:

1. **Reinstate Economic Hardship Deferment – By asking lawmakers to reverse an executive order which will force residents in July of 2009 to start repaying their med-school loans (often in excess of \$200,000) or start accruing interest on them.**
2. **Develop Medical Home Teaching Curriculum - By seizing the national momentum around the idea of the Medical Home to develop and market curriculum.**

These resolutions – as well as sister resolutions passed by the MAFP Medical Student Delegation – will now go on to the National Congress of Delegates where they will be debated and likely be adopted as new AAFP policy.

In addition, we have been working hard to help more residents participate in the MAFP by urging our state's residency programs to recognize the important role their Academy plays in both medical education and professional advocacy by helping accommodate participation in those activities for their residents.

Finally, we are developing ways to help residents master the principles and skills of the Medical Home model. This will help residents graduate with the confidence to go into practice as new leaders and advocates of medical home medicine.

I am excited to be starting another term as your director! Please feel free to contact me at [wnichols@umn.edu](mailto:wnichols@umn.edu) with your ideas or concerns.



*Will Nicholson, M.D.  
Third Year Resident  
St. John's Family  
Medicine*

## MAFP Student Director Report

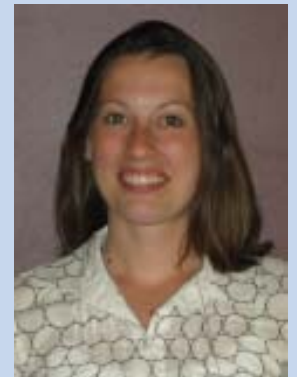
During the first few hours as Student Director, it was clear to me why Minnesota is a great place to be a medical student pursuing Family Medicine! At the House of Delegates meeting in April, a resolution was presented asking for the MAFP's support in reinstating the Economic Hardship Loan Deferment program on a national level. As the Board of Directors meeting began that evening, I sat in awe. As the only student in the room, I witnessed a beautiful explosion of passion and energy from members of the Board. As soon as one physician mentioned the loan deferment program, it was like a series of fireworks had begun. Within minutes, there were plans to write letters and make phone calls. There were ideas of important people to contact and lists of actions to be taken. I was stunned. These physicians were willing to do whatever they could to support us with their time, energy and resources. We certainly are a lucky group of students to have such abundant support from the MAFP!

Within a few months, the Academy demonstrated their support again. Through donations from Academy chapters and the University of Minnesota Department of Family Medicine, Minnesota was impressively well-represented at this year's National Conference in Kansas City. Students representing all three medical schools attended on full scholarships. During the Student Congress, students were able to speak out about ending pharmaceutical and medical industry funding of Continuing Medical Education and student scholarships to the National Conference. As one of the largest state delegations, we were able to represent the power of a state Academy's support in eliminating the need for industry funding of student scholarships.

We were also able to present and pass two important and ambitious resolutions in the Student Congress. One resolution asks the AAFP to develop objectives for a Patient-Centered Medical Home curriculum and challenge medical schools and residency programs to integrate those objectives by 2015. The vote to pass this resolution demonstrates students' readiness to embrace the Patient-Centered Medical Home as a strong component to a brighter future for Family Medicine.

The other resolution was inspired by the explosion that was witnessed at this year's first Board Meeting. The resolution asks the AAFP to write letters to the U.S. Executive Branch leadership demanding restoration of Economic Hardship Deferment and the FamMedPAC to make restoration of Economic Hardship Deferment one of their top three priorities for the next legislative session. Passage of this resolution demonstrates student concern for the future of Family Medicine and the effect that financial strain may have on students' specialty choice.

If the view from here is any indication of what will continue to blossom during the remainder of this year's journey, I cannot wait to stand with you all in awe of the true beauty of Family Medicine in Minnesota!



*Beth Menzel  
4<sup>th</sup> Year Student  
Mayo Medical School  
Student Director*



# THE BULLETIN BOARD



## Tobacco Cessation Podcasts

"Ask the Expert" podcast interviews are available online at [www.aafp.org/askandact/podcasts](http://www.aafp.org/askandact/podcasts). Each podcast is 10-15 minutes. Topics include:

1. New Public Health Service Clinical Practice Guidelines.
2. Pharmacotherapy for Tobacco Dependence.
3. Tobacco Cessation Quitlines.
4. How to Provide Tobacco Cessation Treatment to Patients with Mental Illness.
5. Payment for Tobacco Cessation Treatment.



## Self Breast Examination DVD Available for Patients

A DVD teaching patients how to do self-breast examinations is now available. The DVD was developed by Rusin Medical Devices, LLC, a family business that was started by MAFP member, Jim Rusin, M.D., MBA. For more information, visit [www.rusinmedical.com](http://www.rusinmedical.com).

## Mark Your Calendar for AAFP Live!

FREE REGISTRATION/EARN UP TO 12.5 CREDITS

Friday, October 24, 2008  
Hyatt Minneapolis

7:15 a.m. Breakfast & Registration  
8:15 a.m. Welcome  
4:00 p.m. Adjourn  
(Includes Lunch)

Topics covered will be Hyperlipidemia, Immunizations, Pain Management, Musculoskeletal Concerns in Pediatric Patients, and Appropriate Use of Opioids.

To register go to: [www.aafp.org/aafplive/](http://www.aafp.org/aafplive/)



*AAFP Live! is supported by Alpharma, Merck & Co., Inc., Merck/Schering-Plough Pharmaceuticals, Purdue Pharma L.P. and Pfizer*

## 2009 Winter Conference: Neurology & Geriatrics Two Topics – Two Days

Neurology & Geriatrics are the focus of our 2009 Winter Conference. The conference will take place January 30 & 31 at Arrowwood Resort in Alexandria. Confirmed sessions include Heart Failure, Pain Management and Colorectal Screening Guidelines. In the works we have Neuro-migraines, Multiple Sclerosis, Parkinson's Update, Tremor, Botulism Injections, West Nile, Dementia, Alzheimer's, Peripheral Vascular Disease, Bedsores, Medication No-Nos in Geriatrics, Fall prevention, Osteoporosis, Chronic Disease Management, and update on screenings (i.e. abdominal ultrasound, pap smears, immunizations, etc.) If you are interested in *presenting* on any of those topics, please contact Lisa Regehr at the MAFP office by calling (952) 542-0130, (800) 999-8198, or emailing [lregehr@mafp.org](mailto:lregehr@mafp.org).

At this conference, CME sessions take place in the mornings leaving afternoons open to spend with family or to get away on your own. Arrowwood's Big Splash Indoor Waterpark has four-story slides, a lazy river inner tube ride, a tropical whirlpool spa and "Calypso Cabana," the 500 gallon splash bucket! Trek (across the parking lot) to Arrowwood's Snow Center for cross country skiing, ice skating, snowmobiling, sledding and ice fishing. Or, unwind at the Darling Reflections Spa with a pampering massage. Hours and rates are available at [www.arrowwoodresort.com](http://www.arrowwoodresort.com).

Arrowwood lies just outside the charming town of Alexandria which is packed with shops, restaurants and a movie theater. Visit [www.alexandriamn.org](http://www.alexandriamn.org) to learn more.



Rooms are being held by Arrowwood at a special rate until December 30, 2008. Waterpark tickets can be wrapped into your room rate upon request. Please remember to mention the Minnesota Academy of Family Physicians when making your reservation at (320) 762-1124. Childcare is provided through Camp Arrowwood which provides games, movies and supervision for children ages 4 – 12. The cost is \$25/child for one day or \$35/child for two days. **Parents must register their children, before January 10** by calling (320) 762-1124 and asking for the Camp Arrowwood Extension 270. Specify which day(s) child care is needed and that you are with the Minnesota Academy of Family Physicians' Conference. Children must be at least 4 years old and potty-trained to attend. Arrowwood can provide a list of babysitters for children under 4.

The Winter Conference is possible through the work of our planning committee and the support of our exhibitors. Watch your mail for a registration brochure.

# 2007-2008 MAFP Highlights and Accomplishments

MAFP held Maintenance of Certification workshops

2008 Winter Conference focused on pediatric topics in Alexandria

Residency Recruitment Event (a.k.a. Luau) gave students a chance to investigate residency options

## EDUCATIONAL offerings

MAFP co-sponsored the High Performance Physician Conference (Electronic Medical Records)

Papers presented at MAFP Research Forum

Spring Refresher drew hundreds of family doctors to the RiverCentre in St. Paul

Family doctors staffed phone bank at KARE-11 television in January

Patient education releases focused on 'Watching for Whooping Cough', 'Memory Loss', 'Staying Healthy During International Travel', and 'Respecting the Power of the Sun'

Volunteers made Tar Wars presentations in state classrooms

Erik Kantan, M.D., selected as the 2008 Family Physician of the Year

Medical Home cable commercial ran on Twin Cities cable

Members received awards during the Spring Refresher (Teacher of the Year, Resident of the Year, Researcher of the Year, and Student Award)

## PUBLIC relations

## MEMBERSHIP

MAFP continued membership growth

(79.9% of Minnesota family physicians belonged to the MAFP. Nationally, the market share was 72.6%.)

(Minnesota's active member retention rate was 96.3%. The national active retention rate was 94.8%.)

MAFP received a Full Delegation award from AAFP for having members representing all 5 special constituencies at the National Conference of Special Constituents

Four MAFP members were appointed to AAFP Commissions

## LEGISLATIVE and MEDICAL HOME

Presented Legislative Achievement Awards to two state lawmakers for their work on authoring the Freedom to Breathe Act

Worked to maintain the integrity of the Health Care Access Fund

Sent letter to all MN legislators with 2-page Medical Home summary

Developed a document outlining the Myths and Misperceptions of the PCMH (Primary Care Medical Home)

Worked in collaboration with MMA on Patient-Centered Medical Home legislation

Developed 2-page talking points on Medical Home for use by members in discussions with legislators

Medical Home marketing goals were incorporated into the MAFP strategic plan

## MEMBER relations

Initiated discussion with medical schools regarding importance of Medical Homes

Educated members about Medical Home by including education session at the Spring Refresher and publishing three articles in the *Minnesota Family Physician*

Sponsored events at Family Medicine Interest Groups

Scholarships (in partnership with the University of Minnesota) allowed 23 medical students to the AAFP National Conference of Family Medicine Residents and Medical Students

Held Family Medicine Academic Round Table

Held Minnesota Reception at the AAFP National Conference

Research Network

Coordinated MAFP member participation in advisory groups working on health care reform and Medical Home definitions

# 2007-2008 MAFP Financial Report

## Financial Update

Preliminary, unaudited statements show MAFP program costs to be right on target when compared to budget. While the overall decline in the investment markets did affect the Academy's accounts, both the short- and long-term funds continue to exceed policy requirements.

The ad hoc Budget Review Committee presented a balanced budget to the Board of Directors for fiscal year 2008-2009.

The Committee continues to actively monitor and modify MAFP investments, ensuring a healthy future.

## \*Statement of Financial Position June 30, 2008

### Assets

|   |               |
|---|---------------|
| Cash and Cash equivalents                 | 326,348       |
| Accounts Receivables                      | 2,454         |
| Prepaid Items                             | 4,739         |
| Long Term Investments                     | 873,220       |
| Equipment Net of Accumulated Depreciation | <u>21,310</u> |

Total Assets 1,228,070

### Liabilities and Capital

#### Liabilities

|                                     |               |
|-------------------------------------|---------------|
| Accounts Payable/Accrued Expenses   | 38,032        |
| Deferred Membership Dues            | 263,553       |
| Deferred Grants/Registration Income | <u>20,113</u> |

Total Liabilities 321,748

#### Capital

Net Assets 906,322

Total Liabilities & Capital 1, 228,070

## Statement of Activities 2007-2008

### Revenues

#### Education

|                         |         |
|-------------------------|---------|
| Spring Refresher        | 166,585 |
| Other Conferences       | 27,825  |
| Research Forum          | 9,670   |
| Research Network Grants | 5,000   |

### Revenues (cont.)

#### Member Services

|  |         |
|--|---------|
| Member Dues                            | 538,800 |
| Resident/Medical Student Activities    | 20,070  |
| Minnesota Family Physician Advertising | 22,415  |

#### Other

|                                 |              |
|---------------------------------|--------------|
| Interest & Dividends            | 13,629       |
| Unrealized Gains on Investments | (47,231)     |
| Misc. Income                    | <u>5,607</u> |

Total Revenues 762,371

### Expenditures

#### Education

|                             |         |
|-----------------------------|---------|
| Spring Refresher            | 106,720 |
| Other Conferences           | 13,987  |
| Research Forum              | 7,843   |
| Educational Program Support | 38,892  |

#### Member Services

|   |        |
|---|--------|
| Member Services/Recruitment & Retention | 37,930 |
| Legislative Activities                  | 36,957 |
| Resident/Medical Student Activities     | 36,678 |
| Minnesota Family Physician & Web Page   | 24,869 |
| Public & External Relations/Liaisoning  | 37,350 |
| Research Activities                     | 8,221  |

#### Other Expenses

|                                   |         |
|-----------------------------------|---------|
| Board/Finance/Policy & Program    | 107,254 |
| Annual Meeting/House of Delegates | 30,023  |
| Dues Allocated to MAFP Foundation | 39,900  |

#### Administration

|  |                |
|--|----------------|
| Office Space, Equipment, Insurance and Benefits, Printing, Supplies, Telephone | <u>283,619</u> |
|--|----------------|

Total Expenditures 810,244

Net Income (Loss) (47,873)

\* These are preliminary, unaudited numbers.



# MINNESOTA ACADEMY OF FAMILY PHYSICIANS FOUNDATION NEWS



*The mission of the MAFP Foundation is to support family physician health care delivery, research and education, and to promote the specialty of family medicine.*

## Statewide Programs Reach Patients, Students, Residents, and Family Physicians

### Resident Research Award Program Update

Last May, the MAFP Foundation Board of Directors voted to support a proposal brought forward by the MAFP Research and Quality Improvement Committee to start a research award for family medicine residents. The Foundation is pleased to announce that the Alley Institute will help fund three awards for the first year of the program. The Resident Research Award Program is designed to give family medicine residents, enrolled in Minnesota's residency programs, a chance to design a research project related to family medicine. Preliminary feedback from family physicians and residency programs has been positive. Thanks to Drs. Agarter, Gebhart, Jensen, and Zink for serving on the Task Force to reach out to residency program directors, design the promotions and application criteria, and explore funding leads. To find out how your residency program can get involved, contact Lynn Balfour at 952.542.0130 or email [foundation@mafp.org](mailto:foundation@mafp.org).

### Students Speak Out About Their Externships

Patricia Dickman and Libby Wagner recently talked about their experience working with a mentor on a research project as part of the David Mersy, M.D. Externship Program. We're pleased to share their comments with you and the many other donors who provide ongoing financial support to this medical student initiative.



Patricia Dickman



Libby Wagner

"I had the opportunity to work one-on-one with an outstanding family physician, Dr. Sharon Allen, on a smoking cessation project that I designed myself," said Patricia Dickman, University of Minnesota Medical School. "I also worked with a team of researchers at the Tobacco Use Research Center. As a result of my research, I presented a poster at the Society of Research on Nicotine and Tobacco's national conference."

Libby Wagner, University of Minnesota – Duluth, Medical School, commented that the externship program provided her with the opportunity to pursue a project of personal interest, which the results of could possibly improve family medicine in Minnesota. "The Externship Program is a great way to meet people in the MAFP," said Wagner.

The Foundation will offer three externships next Spring. Stay tuned for more information about the application procedure.

### Contributions from the Corporate Advisory Council Boost Programs

The Foundation recognizes the corporate members of the 2008 Corporate Advisory Council (CAC). The CAC is a unique partnership between the corporate sector and the MAFP Foundation that provides a means for communication and the exchange of ideas related to family medicine; works to identify issues of common concern; and determines how best to address those issues together. Members pay annual membership dues which help provide financial support for the Foundation and its programs. We are grateful to all of the CAC members for their participation in the Foundation's activities and programs.



For more information about joining the Corporate Advisory Council, please contact Lynn Balfour at 952.542.0130 or visit [www.mafp.org/foundation.asp](http://www.mafp.org/foundation.asp).

### 'Coordinating Care for Chronic Kidney Disease Patients' Update

In the last issue of *Minnesota Family Physician*, the Foundation reported working with Stratis Health on a collaborative effort to enhance the communication between nephrologists and family physicians around coordinating care of chronic kidney disease patients in Minnesota. Since that time, Stratis Health learned that CMS did not approve the grant for funding support. Plan B is now taking shape with the Foundation and Stratis Health meeting to explore new funding possibilities with additional partners who have a vested interest in chronic kidney disease. To share your thoughts, please email [foundation@mafp.org](mailto:foundation@mafp.org).



**Affiliated Community Medical Centers, Willmar, MN:** Physician-owned multi specialty clinic is seeking a full-time physician to join the Family Practice Department in their Willmar, Redwood Falls, Granite Falls, Marshall, Litchfield and Benson affiliates. These positions offer a guaranteed salary plus production incentive and an outstanding benefit package. For further information please contact Kari Bredberg, Physician Recruitment Coordinator, Affiliated Community Medical Centers, 101 Willmar Avenue SW, Willmar, MN 56201, 320-231-6366 or e-mail [karib@acmc.com](mailto:karib@acmc.com) Website: [www.acmc.com](http://www.acmc.com).

**HealthEast Care System of St. Paul, MN,** named one of the “Best Places to Work” in Minnesota three years in a row, is one of the Midwest’s premier hospital and clinic systems. Due to new growth, we currently have opportunities for **Family Medicine Physicians** at seven of our clinics, with and without OB. We also seek **Family Medicine Hospitalists** at our four hospitals (St. Joseph’s, St. John’s, Woodwinds and Bethesda). We offer competitive compensation and benefit packages, family friendly schedules, signing bonus and relocation assistance. For details, visit [www.healtheast.org/careers](http://www.healtheast.org/careers) or contact Kathy Nikunen, Physician Recruitment Specialist, at 651-326-2009 or [kenikunen@healtheast.org](mailto:kenikunen@healtheast.org).

**Cuyuna Regional Medical Center – Comprehensive Health Care Meets Lake Country Living.** Central Lakes Medical Clinic, P.A. in Crosby, MN is seeking BC/BE Family Medicine physicians with OB to join our multi-specialty group. Crosby is located 14 miles northeast of Brainerd/Baxter within the coveted Brainerd Lakes area. Be part of an independent practice while working collaboratively with our comprehensive and progressive medical campus. To learn more about our exciting opportunities, call Becky at 877-546-2308 or email her at [rtbiesfeld@cuyunamed.org](mailto:rtbiesfeld@cuyunamed.org). Visit our websites at [www.cuyunamed.org](http://www.cuyunamed.org) and [www.mimismn.org](http://www.mimismn.org).

**Family Medical Center** has an opportunity for a family practitioner who wishes to practice with a privately owned physician driven multi-specialty group practice. Family Medical Center, Little Falls, Minnesota is a 17 physician group practice; 10 FPs, 2 IMs, 1Ped, 2 GSs and 2 Ob/Gyns. Shareholder status is available after one year. Call schedule is 1:10, hospital provides ED coverage. The opportunity provides a competitive salary with bonus opportunity and an excellent retirement plan. Hospital is highly supportive and provides relocation assistance, signing bonus and two-year income guarantee. Little Falls is located in Central Minnesota on the Mississippi River. Abundant outdoor activities prevail as well as an excellent family centered quality of life. Contact us at: [www.fmclf.com](http://www.fmclf.com) [ddvorak@fmclf.com](mailto:ddvorak@fmclf.com).

**Altru Health System**, a not-for-profit 260 bed Level II Trauma designated healthcare system in Grand Forks, ND, has opportunities for BC/BE physicians in the following specialties: Critical Care/Pulmonology, Cardiology (Interventional), Gastroenterology, Internal Medicine, Nephrology, Diagnostic Radiology, Dermatology, Rheumatology, Orthopedic Surgery, Family Medicine and Psychiatry. Join 188 physicians representing 44 specialties in a community of 65,000, serving a primary care area of over 250,000. Teaching opportunities available through the University of North Dakota School of Medicine. Altru Health System also has physician opportunities in two of our branch locations including the beautiful lake communities of Devils Lake, ND and Warroad, MN on Lake of the Woods. Specialties available in these areas include: Family Medicine - Devils Lake and Warroad, Internal Medicine – Devils Lake, General Surgeon – Devils Lake. Altru offers extensive and competitive salary and benefits packages. For more information on these opportunities contact: Kerri Hjelmstad, Altru Health System, PO Box 6003, Grand Forks, ND 58201-6003. Phone: 1-800-437-5373 ext. 6596 Fax: 701-780-6641 Email: [khjelmstad@altru.org](mailto:khjelmstad@altru.org), [www.altru.org](http://www.altru.org).

**Allina Hospitals & Clinics** is proud to be the first MN health care organization to earn the Davies Award, the industry’s preeminent award from the Healthcare Information and Management Systems Society, with cutting-edge technology on our new electronic medical record system. As a not-for-profit family of hospitals, clinics and other care services, we are dedicated to meeting the lifelong health care needs of communities throughout Minnesota and western Wisconsin. Currently we are seeking BE/BC Family Physicians in the following Minnesota communities: Blaine, Brooklyn Park, Buffalo, Cokato, Cambridge, Coon Rapids, Cottage Grove, Eagan, Elk River, Faribault, Forest Lake, Hastings, Litchfield, Maple Grove, Mora, Northfield, Prior Lake, Ramsey, Richfield, Shakopee, St. Michael, and Woodbury, and these locations in Wisconsin: Prescott, and River Falls. Please contact us for more information or visit our website at [www.allina.com](http://www.allina.com). Allina Physician Recruitment Services, [recruit@allina.com](mailto:recruit@allina.com) or 612-262-4560 / 1-800-248-4921. EOE.

**The New Ulm Medical Center & the Physicians Group of New Ulm** is seeking a BC/BE Family Practitioner to join our team of 17 primary care physicians (with multi-specialty services on site) in our newly expanded clinic! We currently have a need for 1 FP (without OB) in clinic practice (1:11 call). We are open to part- or full-time candidates. New Ulm is nestled just 90 miles southwest of the Twin Cities, in the heart of the scenic Minnesota River Valley. The community is home to 13,500 people and boasts a thriving, diverse economy with a healthy mix of retail, manufacturing and industry. New Ulm is famous for its authentic German heritage and with all of the festivals, historic monuments, attractions, shopping and many cultural events. Exceptional medical access and three school systems, complimented by numerous parks, safe streets and abundant recreational opportunities make New Ulm a great place to settle down and raise a family. For more information, please contact Kaitlin Osborn at [Kaitlin.Osborn@allina.com](mailto:Kaitlin.Osborn@allina.com) / 1-800.248.4921 or view all of our openings at [www.allina.com](http://www.allina.com). EOE

Practice Opportunities - Continued on page 12

**Midwest Family Practice Opportunity:** Balance life and patient care. Group practice opportunity for BC/BE Family Practice physician in scenic Winona, MN. Opportunity offers single-hospital setting, competitive compensation and the opportunity to pursue individual medical interests while balancing professional and personal life. Physician would join the medical staff of Community Memorial Hospital, which is linked to area healthcare providers by a community-wide Electronic Medical Record. Bordered by bluffs and the Mississippi river, Winona boasts good schools, two universities, international businesses and bountiful recreational and cultural opportunities. No J1 opportunities. Contact: Cathy Fangman, 855 Mankato Avenue, Winona, MN 55987. Phone: (800) 944-3960, ext. 4301; Website: [www.winonahealth.org](http://www.winonahealth.org); Email: [cfangman@winonahealth.org](mailto:cfangman@winonahealth.org).

Urban community clinic organization seeks **compassionate, experienced family physicians** for expanded staff positions. Option for OB and participation in hospital medical attending. Primary care internist, pediatrician, or meds/peds also considered. Qualified candidates will be BE/BC and desire to work in a diverse community-based setting. WSCHS is a FQHC serving 35,000 patients annually at 18 medical, dental, homeless, public housing, and school-based clinic sites located in St. Paul. WSCHS serves large Latino, Hmong, immigrant, and refugee populations. Bilingual/bicultural candidates are strongly encouraged to apply. Opportunity for loan repayment. Resumes/CVs to Human Resources, West Side Community Health Services, 153 Cesar Chavez Street, St. Paul, MN 55107; fax 651-602-7517; or email [hr@westsidechs.org](mailto:hr@westsidechs.org).

**Lake City Medical Center – Mayo Health System** is seeking family medicine physicians to join our compassionate, high quality and nationally award-winning team of health care professionals. A physician-led family practice group, we strive for personal, compassionate health care supported by advanced technology. Our main campus, located in Lake City, Minnesota, houses our clinic, hospital and nursing home. We also have three off-campus clinics in Wabasha and Plainview, Minnesota and Alma, Wisconsin. Lake City Medical Center offers a competitive salary and benefits package, along with a friendly and rewarding work environment. For more information, contact Cheri Kramer, chief administrative officer, 651-345-3321.

**HealthPartners Central Minnesota Clinics (HPCMC)**, a well-established multi-specialty group located in the award winning “Most Liveable City” of St. Cloud, MN, is now actively looking for BC/BE Family Medicine Physicians (OB preferred but not required) to join its team of experienced providers. This is an excellent opportunity both for an experienced physician or a new resident. Located just 55 miles northwest of the Minneapolis/St. Paul metro area, this growing community of 125,000 enjoys a high quality of life with low cost of living. HPCMC offers call 1:10, fully-functional electronic medical record, competitive salary with productivity, full benefits package, and paid malpractice. If you are interested in this rewarding professional opportunity, send CV to: **Kathy Cumming O’Hara, HealthPartners Central Minnesota Clinics, 1245 15<sup>th</sup> St. No, St. Cloud, MN 56303, phone: 800-370-0570 Ext. 2007, email: [kcummingohara@hpcmc.com](mailto:kcummingohara@hpcmc.com).**

**Fairview Health Services** seeks family medicine physicians for inpatient/outpatient or outpatient-only practices. Enjoy 4-day workweeks and optional OB. Experience accessible specialist consultations and onsite lab and radiology. Work and live in vibrant communities: urban, suburban and rural practice opportunities meet your and your families’ needs. Enjoy an initial income guarantee with productivity component and a fantastic benefit package, including malpractice insurance. Shape your practice to fit your life as a part of our nationally recognized, patient-centered, evidence-based care team. Visit [fairview.org/physicians](http://fairview.org/physicians) to explore our current opportunities, then apply online, or call Bridgett Gawlik at 800-842-6469 or e-mail [recruit1@fairview.org](mailto:recruit1@fairview.org). EEO/AA Employer.

**Park Nicollet Clinic is seeking BE/BC Family Medicine Physicians** to join its multispecialty group in Minneapolis. Our Family Medicine department provides comprehensive services in health promotion, screening, diagnosis and disease management at 17 Park Nicollet Clinic locations in Minneapolis and surrounding suburban communities. It is our goal to provide care for most of the entire family’s health care needs. Practice options include participating in our hospital service or 100% outpatient practice. Our integrated health care system, including Park Nicollet Clinic and Methodist Hospital, is recognized locally and nationally for great care and leadership. Share your expertise in an environment that supports new treatments and innovations while embracing a strong work-life balance. For immediate consideration, please send CV to: Missy Fisher, Director Clinician Recruitment, Park Nicollet Health Services, 3800 Park Nicollet Boulevard, St. Louis Park, MN 55416. For more information contact Ms. Fisher at (952) 993-6025 or (888) 437-5004; email [Melissa.Fisher@parknicollet.com](mailto:Melissa.Fisher@parknicollet.com).

**Urgent Care Physician – Park Nicollet Clinic:** Park Nicollet Clinic is seeking full-time BE/BC Family Medicine Physicians to join our Urgent Care Department. We offer Urgent Care services at six of our clinics. We invite you to share your expertise in an environment that supports flexible scheduling and a strong work-life balance. Our integrated health care system and EMR, including Methodist Hospital, is recognized locally and nationally for great care and leadership. Send CV to: Missy Fisher, Park Nicollet Health Services, 3800 Park Nicollet Boulevard, St. Louis Park, MN 55416, phone 952-993-6025, email: [fishem@parknicollet.com](mailto:fishem@parknicollet.com). To learn more or apply online, visit [parknicolletphysician.jobs](http://parknicolletphysician.jobs). AA/EOE

**Tri-County Hospital** seeks a BC/BE Family Practice Physician to join our growing regional health care system. 4/days week, 6.5 scheduled hours/day, 46 weeks/year. No OB required. No Call. Guaranteed salary plus production incentive, liability coverage, relocation expenses, and competitive benefits. Excellent schools, unlimited seasonal sports activities, numerous artistic opportunities and miles of lakeshore are all part of the attraction in this region. Located in the heart of north central MN lake country – just 2 ½ hours from the Twin Cities. Please contact Lori Gress, Tri-County Hospital, 415 North Jefferson, Wadena, MN 56482. 218-631-7462 or 218-639-0572 cell. Email: [lori.gress@tricityhospital.org](mailto:lori.gress@tricityhospital.org).

---

**Outstanding Twin City Opportunity. Johnson Street Medical Clinic** is a Twin City independent medical clinic looking for exceptional physicians who want to practice excellent medicine their way rather than in a corporate style. We offer the setting, management and support that will assist you to realize your dreams. Practicing medicine should be both personally and financially rewarding – and it is at Johnson Street Medical Clinic. Please fax your CV to (612) 788-4930 or give us a call at (612) 782-0900. All conversations will be held in the strictest of confidence.

---

**Luther Midelfort-Mayo Health System in Chetek, Wisconsin** is seeking a physician BC/BE in Family Medicine to join an established clinic. OB required. Call 1:13. OB call 1:6. Luther Midelfort-Mayo Health System is a 225 physician-directed, fully integrated multi-specialty clinic and hospital owned by the Mayo Clinic. Luther Midelfort physicians practice evidenced-based, protocol-driven medicine. Electronic and on-line resources make it possible to practice state-of-the-art medicine. Chetek is a thriving community with an excellent educational system located 45 minutes north of Eau Claire, WI. Contact Cyndi Edwards, 800-573-2580; [edwards.cyndi@mayo.edu](mailto:edwards.cyndi@mayo.edu); fax 715-838-6192; or [www.luthermidelfort.org](http://www.luthermidelfort.org).

---

**Hospitalist opportunities available for Family Practice physicians** within Allina Hospitals & Clinics at United Hospital in St. Paul; Cambridge Medical Center in Cambridge; and Regina Medical Center in Hastings, MN. Full time and part time options available. No call. Block schedule at United Hospital. Day schedule at Regina and Cambridge Medical Center with 1 weekend a month at Cambridge. Please contact us for more information or visit our website at [www.allina.com](http://www.allina.com). Contact Allina Physician Recruitment Services via email at [recruit@allina.com](mailto:recruit@allina.com) or phone: 612.262.4584 / 1.800.248.4921. EOE.

---

**Red Cedar Medical Center-Mayo Health System in Menomonie, Wisconsin**, is seeking a physician BC/BE in Family Medicine. OB is optional. Call of 1:10. Opportunity to moonlight in Red Cedar E.R. Two-year salary guarantee and complete benefits package. Red Cedar Medical Center is a vibrant 34-physician state-of-the-art, multi-specialty clinic and a 25-bed critical access hospital located one hour east of Minneapolis and ½ hour west of Eau Claire. Menomonie is home to the 7,500 students at the University of Wisconsin-Stout. Perched on the banks of Lake Menomin, the community offers strong schools and safe neighborhoods in a beautiful setting. Contact Cyndi Edwards, 1-800-573-2580; fax 715-838-6192; e-mail [Edwards.cyndi@mayo.edu](mailto:Edwards.cyndi@mayo.edu) or [www.rcmc-mhs.org](http://www.rcmc-mhs.org).

---

**Luther Midelfort – Mayo Health System in Eau Claire, Wisconsin**, is seeking a physician BC/BE in Family Medicine for a full-time, outpatient practice. “Phone” call of 1:23 and one weekend in Urgent Care every 23<sup>rd</sup> weekend. Compensated on hourly basis for Urgent Care hours. Family Medicine Department recently moved to a brand new clinic addition. In partnership with Mayo Clinic, Luther Midelfort is a physician-directed, vertically integrated hospital and multispecialty clinic based in Eau Claire, WI. With interest, please contact Cyndi Edwards, 800-573-2580; fax 715-838-6192; e-mail [edwards.cyndi@mayo.edu](mailto:edwards.cyndi@mayo.edu). Visit our website at [www.luthermidelfort.org](http://www.luthermidelfort.org).

---

**MENOMONIE WISCONSIN:** Red Cedar Medical Center – Mayo Health System, an integrated 25-bed critical access hospital and 34-physician multi-specialty group, is seeking a physician **BC/BE in Emergency Medicine, Internal Medicine (experience treating children) or Family Medicine** for our Emergency Department and Urgent Care. 8,500 ER visits coupled with 17,000 urgent care visits are shared by physicians and mid-level providers. Twelve, 12-hour shifts per month. Competitive compensation and complete benefits package. Menomonie, located 1 hour east of Minneapolis/St. Paul and ½ hour west of Eau Claire, WI, is a university community of 15,000. For more information, contact Cyndi Edwards, 800-573-2580; fax 715-838-6192; e-mail [edwards.cyndi@mayo.edu](mailto:edwards.cyndi@mayo.edu); or you may visit our website at [www.rcmc-mhs.org](http://www.rcmc-mhs.org).

---

**Bloomer, WI:** Luther Midelfort Chippewa Valley – Mayo Health System is seeking a **BC/BE Family Practitioner or BC/BE Med-Peds** with interest in both in/outpatient care opportunities. Pre and post natal care at this site but NO deliveries. Call of 1:5. No first call in the E.D. Call involves back up for mid-levels in the E.D. and is compensated. Moonlighting in the E.D. is optional and compensated on an hourly basis. Bloomer, a growing community 3,500, offers strong schools, many four-season recreational opportunities, and easy access to higher education. Contact Cyndi Edwards, 800-573-2580; fax 715-838-6192; e-mail [edwards.cyndi@mayo.edu](mailto:edwards.cyndi@mayo.edu) or you may visit our website at [www.luthermidelfort.org](http://www.luthermidelfort.org).

---

**Luther Midelfort Northland-Mayo Health System in Rice Lake, Wisconsin** is seeking a physician BC/BE in Family Medicine. Traditional family practice with OB optional. General call of 1:13, OB call of 1:6. Luther Midelfort is a 230-physician directed, integrated hospital and multispecialty clinic based in Eau Claire, WI and partnered with Mayo Clinic. Our physicians practice evidence based, protocol driven medicine. EMR, PACS, and other on-line resources make it possible to practice state-of-the-art medicine in a vacation-like setting. Rice Lake, a community of 8,300, is located in Northwest Wisconsin, 100 miles east of Minneapolis, MN and 60 miles north of Eau Claire, WI. Contact Cyndi Edwards, 800-573-2580; [edwards.cyndi@mayo.edu](mailto:edwards.cyndi@mayo.edu); fax 715-838-6192; or [www.luthermidelfort.org](http://www.luthermidelfort.org).

---

**Luther Midelfort Northland-Mayo Health System in Cameron, Wisconsin** is seeking a physician BC/BE in Family Medicine. Traditional family practice with OB optional. General call of 1:13, OB call of 1:6. Luther Midelfort is a 230-physician directed, integrated hospital and multispecialty clinic based in Eau Claire, WI and partnered with Mayo Clinic. Our physicians practice evidence based, protocol driven medicine. EMR, PACS, and other on-line resources make it possible to practice state-of-the-art medicine in a vacation-like setting. Cameron is located in Northwest Wisconsin, 100 miles east of Minneapolis, MN and 60 miles north of Eau Claire, WI. Contact Cyndi Edwards, 800-573-2580; [edwards.cyndi@mayo.edu](mailto:edwards.cyndi@mayo.edu); fax 715-838-6192; or visit our website at [www.luthermidelfort.org](http://www.luthermidelfort.org).

---

**Champlin Urgent Care:** V-Kare Clinic seeks board certified primary care physicians, nurse practitioners and physician assistant for evening and weekend positions. Fax: 763-323-1027 E-mail: [drhussain@vkare.com](mailto:drhussain@vkare.com).

---

Practice Opportunities - Continued on page 14

**Opportunity for Urgent Care.** Due to expanding volumes, we are looking to increase our pool of urgent care providers. St. Francis Urgent Care in Shakopee MN operates M-F (6-10 p.m.), weekends (1-10 p.m). Patient's are highly screened and can be seen expeditiously. Documentation minimized through use of full-time scribes. Competencies must include suturing, splinting, pediatric experience, use of EMR. Base hourly rate of \$ 120.00 and a per patient productivity bonus; malpractice coverage. Contact: Dr. Manuel Roman MD, Suburban Emergency Associates, 952-221-2187 cell, [roman@suburbanemergency.com](mailto:roman@suburbanemergency.com).

**Mankato, MN—Physician-owned Mankato Clinic** has openings for BC/BE physicians with or without interest in OB. We offer a 24-hour telephone triage system, and a call schedule of 1:14. Our market competitive income guarantee is followed by production incentive income. We have a physician-friendly benefits package including above market CME/Business expense allowance and a generous profit-sharing 401k plan. Coverage is for a single 170 bed hospital. No commuting hassles, great shopping too, we are located 70 miles south of the Twin Cities. Contact Dennis Davito, Provider Placement at 1230 East Main Street, Mankato, MN 56001; email: [ddavito@mankato-clinic.com](mailto:ddavito@mankato-clinic.com), call 507-389-8654 or fax CV to 507-388-3401.

**Grand Marais, MN:** Interested in joining a vibrant, hard working staff including 3 Family Practitioners and a NP? **Sawtooth Mountain Clinic, Inc.** – a Community Health Center on the shores of Lake Superior. Live, work and play all in this illustrious northwoods country in NE Minnesota! **Hiring for a BE/BC FP** for clinic hours; in-patient and nursing home care. Send resumes to Sue Nordman, COO at [sue@sawtoothmountainclinic.org](mailto:sue@sawtoothmountainclinic.org) or phone with inquiries to 218-387-2330 ext. 31. We look forward to meeting you!

**Urgent Care Moonlighting Opportunity in Minneapolis:** Independent physician-owned urgent care clinic located conveniently near Uptown in Calhoun Village Shopping Center on W. Lake Street, seeking moonlighting physicians! Flexible hours, great location, friendly staff, competitive pay! Call Dr. Niki Oldenburg at 612-229-1072 or email at [fastcareoftcmc@gmail.com](mailto:fastcareoftcmc@gmail.com).

**Aspen Medical Group, a division of Allina Hospitals & Clinics, located in St. Paul, Minnesota,** seeks full time, part time and moonlighting BC/BE family medicine physicians to join our *Urgent Care Clinics* in Bloomington, Inver Grove Heights, Maplewood and St. Paul. Full Time consists of 31 hours/week, with a combination of days, evenings and weekend hours. Part time and Moonlighting consists of evening and weekend hours. Our clinics are fully staffed with lab, X-ray, MRI, CT, nursing staff and on-call specialists. All candidates must have a MN license and DEA registration. Will consider 2<sup>nd</sup> and 3<sup>rd</sup> year residents. *Full time / Part time Family Medicine, No OB, opportunities* are available at the Aspen clinics located in Highland Park, Maplewood, St. Paul, Inver Grove Heights (inpatient & outpatient or outpatient only), and Minneapolis (outpatient only). Apply online at [www.aspenmed.org](http://www.aspenmed.org), or contact Julie Juba at 866.415.2600, via email at [jjuba@aspenmed.org](mailto:jjuba@aspenmed.org) or fax your CV to 651.642.2796.

**MeritCare Medical Group/MeritCare Health System** is seeking BC/BE family medicine physicians. Excellent opportunities are available in Bemidji, Detroit Lakes, New York Mills and Walker, Minnesota, communities located in the heart of Minnesota lake country and North Dakota communities, Valley City and Jamestown. Good call arrangements and modern well-managed community hospitals. OB is preferred but not required. Immigration and state licensure requirements vary based on individual credentials. MeritCare has legal expertise available to provide guidance through these issues. Excellent salary and full benefits is being offered, paid malpractice, relocation allowance and immigration financial assistance is available as well as starting incentives available at most sites. To learn more visit our website at [www.meritcare.com](http://www.meritcare.com) or contact: Jill Gilleshammer, Physician Recruiter, Phone: 701-280-4851, Fax: 701-280-4136, Email: [Jill.Gilleshammer@meritcare.com](mailto:Jill.Gilleshammer@meritcare.com).

**Meridian Medical Clinic,** a newly opened (2007) medical clinic, affiliated with the Deer River HealthCare Center has exceptional opportunities for both full time and part time Physicians. We invite you to consider these Family Practice positions. The ideal candidates will provide Family Practice physician services typically performed in a primary care clinic, weekdays only, no call. Take this chance to create what you'd like to experience in a practice setting; options to practice OB or other specialties welcome. You will enjoy a rich compensation package that can include a flexible salary design, malpractice insurance, paid continuing education, vacation, 401k and deferred comp plan. Please submit your CV, references and a cover letter of interest by Fax (218) 246-3013; or E-mail to [alanemyers@drhc.org](mailto:alanemyers@drhc.org); feel free to contact me directly to further explore our opportunities: Amy Lane-Myers, Director of Human Resources, Deer River HealthCare Center/Deer River Meridian Medical Clinic, 218-246-3001; [www.drhc.org](http://www.drhc.org). AA/EOE.

**Springfield Medical Center/Mayo Health System** seeks a BE/BC Family Practice Physician with OB to join our Mayo-owned regional medical center. An employed position, competitive salary, excellent benefits, paid malpractice, paid relocation, and generous CME. Springfield is located on highway 14 just 60 mile west of Mankato on the "Laura Ingalls Wilder Memorial Highway." Springfield is a wonderful upper mid-west community with excellent schools with a population of 2,200, four-season recreational opportunities in safe friendly community. We offer both a satisfying professional career and an excellent quality of life in Southern Minnesota. Contact: Jo Montemurno Phone: 866-625-713. Email: [montemurno.jo@mayo.edu](mailto:montemurno.jo@mayo.edu).

**St. Peter Clinic/Mayo Health System** seeks a BE/BC Family Practice Physician with OB optional to join our Mayo-owned regional medical center. Call 1:5. Employed position with a competitive salary, excellent benefits, paid malpractice, paid relocation and generous CME. The beauty and refuge of the Minnesota River Valley draws people to St. Peter (pop. 10,000). Education is a mainstay of St. Peter, which is home to Gustavus Adolphus College. St. Peter offers small town life while being only an hour from Minneapolis. Recreational opportunities are plenty in St. Peter. Contact: Jo Montemurno, 866-625-7131; [montemurno.jo@mayo.edu](mailto:montemurno.jo@mayo.edu); fax: 507-625-4424.

---

**North Memorial** is presently recruiting for BC/BE family physicians to join several of our owned and affiliated family practice clinics. Practice opportunity locations include Brooklyn Park, Robbinsdale, Crystal, Maple Grove, Minneapolis and others. These are excellent practice opportunities with comprehensive compensation and benefits packages. Contact: Mark Peterson, Physician Recruiter, North Memorial Medical Center, 3300 Oakdale Ave. N., Robbinsdale, MN 55422. Telephone (763) 520-1336. E-mail: [mark.peterson@northmemorial.com](mailto:mark.peterson@northmemorial.com) Website: [www.northmemorial.com](http://www.northmemorial.com).

---

**Maple Grove Urgent Care:** Opportunity for physicians or physician assistants looking for part-time hours in busy urgent care clinic located in the growing northwest suburb of Maple Grove. Clinic hours are Monday through Friday 4:00 p.m. to 10:00 p.m, and Saturdays and Sundays 10:00 a.m. to 6:00 p.m. We are open all holidays and offer competitive pay. If you are interested or would like more information call Rick Leach, MD at 612-760-7161, or fax CV to 763-420-7938, or email with attachment to [rdleach@aol.com](mailto:rdleach@aol.com).

---

**A GREAT PLACE TO NUTURE A FAMILY-AND A FAMILY PRACTICE** at Brainerd Lakes Health located in lakes area of Central Minnesota. We are seeking FPs to join our growing group. Call is 1:14 Four- day workweek. Brainerd Lakes Health is an integrated multi-specialty clinic and 162-bed, JCAHO, acute care hospital. We serve 150,000 in a 60 mile radius. We offer competitive compensation, benefits, and malpractice in an area that offers lakes, trees, golf course, fine dining, shopping, arts, and excellent schools all just minutes from work and home. Want more info? Contact Nancy Juntunen at 218-454-5800 or [nancy.juntunen@sjmcmn.org](mailto:nancy.juntunen@sjmcmn.org) AA/EOE.

---

**Wabasha Clinic—Mayo Health System seeks a BC/BE Family Medicine** physician (with OB) to join our staff of nine family physicians, a general surgeon, and five midlevel providers. Call is 1:9. In addition to competitive compensation there is also a comprehensive benefit package provided including fully paid malpractice insurance and free CME at Mayo Clinic Rochester. Wabasha is a scenic community located on the banks of the Mississippi River. Our community of 3,000 residents has a variety of outdoor recreation opportunities in addition to great schools and affordable housing. For further information contact John Shonyo, [shonyo.john@mayo.edu](mailto:shonyo.john@mayo.edu), or call 888.577.5660.

---

**Fairmont Medical Center—Mayo Health System in Fairmont, Minnesota** is seeking Family Medicine physicians, (OB optional) and a Family Medicine physician for the Emergency Department. Call for FP is 1:9. We are a multi-specialty group offering an attractive benefit program and two-year salary guarantee with future production incentives. Our partnership with Mayo Health System allows us to consult with our colleagues at the renowned Mayo Clinic. FMC is totally integrated with physician practices, high-end diagnostics, 57-bed hospital and 40-resident nursing home. Fairmont is located 120 miles south of Minneapolis, MN. Contact Jeannie Green, 800-234-6141; [green.jeannie@mayo.edu](mailto:green.jeannie@mayo.edu) or [www.fairmontmedicalcenter.org](http://www.fairmontmedicalcenter.org).

---

**HealthPartners Medical Group** is currently seeking full-time BC/BE Family Medicine physicians (with and without OB) for the following primary care clinic sites: *North Suburban Family Physicians Clinic – Roseville and Lino Lakes, MN* - Full-range family medicine with or w/o OB, hospital call and rounding are required. *HealthPartners Apple Valley Clinic* – Full-range family medicine, no OB. Hospital call and rounding are optional. We offer a competitive salary, an excellent benefit package, paid malpractice and a commitment to providing exceptional patient care. For more information contact [diane.m.collins@healthpartners.com](mailto:diane.m.collins@healthpartners.com) or call (952) 883-5453, toll-free: (800) 472-4695. Apply online at <http://www.healthpartners.jobs> EO Employer.

---

**Apple Valley Medical Clinic**, a full service, independent family practice clinic serving the fast-growing south suburbs of the Twin Cities, has a fulltime opening for a BC/BE family physician. In addition to our family practice program with 14 family physicians, we operate a unique 24/7 urgent care program, occupational health services, and offer convenient on-site access to medical imaging (CT, MRI, US, X-Ray & Mammography) a pharmacy, physical therapy, and full array of medical specialties on our modern campus. Our practice is physician-owned and governed. Please e-mail your resume to [aberry@applevalleymc.com](mailto:aberry@applevalleymc.com) or call Adam Berry, administrator, at 952-953-9285 for more information.

---

**Express HealthCare** seeks part-time and casual family physicians to work in our State of Art Urgent Care facility. We offer a modern working environment utilizing an EMR, digital imaging and onsite automated prescription dispensing. We are located next to the National Sports Center in Blaine. We are open everyday from 10AM to 10PM. We offer competitive pay and flexible scheduling. Please contact Rick Leach, M.D. at [RDLeach@AOL.com](mailto:RDLeach@AOL.com) or call 612-760-7161.


---


**Allina Medical Clinic-Mora, MN.** Seeking a FP w/OB Physician. Stipend offered to residents while completing residency, full scope rural practice with 90% OP, 10% IP, call is 1:10, including clinic and hospital. C-section training available and routinely participate in medical student education. Recently renovated and financially sound hospital located 65 miles north of Minneapolis. We offer a competitive salary, comprehensive benefits package and malpractice insurance. For more information, please contact Allina Physician Recruitment Services, email: [recruit@allina.com](mailto:recruit@allina.com), phone: 800-248-4921. EOE

---

**Family HealthServices Minnesota, P.A., St. Paul, MN.** FHSM is a thriving, 68 provider independent Family Practice group with 13 offices in the St. Paul, MN area. We are looking for several physicians (OB or Non-OB) to join our practice. We offer full time, part time and the possibility of shared positions. About 2/3 of our physicians do OB. We currently have a combination office/hospital practice, but as hospitals move to a hospitalist model we will likely transition out of the hospital over the next several years. Our call is approx. a 1:10 ratio, but as we transition out of the hospital, that ratio will likely move to 1:20+. We offer competitive compensation, benefits and shareholder opportunities after a year. Please feel free to contact us at 651-772-1572 or email [pberrisford@fhs.com](mailto:pberrisford@fhs.com) for more information.

---



 **TWIN CITIES ORTHOPEDICS**  
**4th Annual Practical  
Orthopedics for Primary  
Care Conference**

Education for Physicians and Others  
Interested in Non-Surgical Orthopedics

**January 23, 2009**

Minneapolis  
Convention Center

• “The Boat Show  
Weekend”

To register, visit [www.tcomn.com](http://www.tcomn.com)  
or call 952-345-7732.

This issue of  
*Minnesota*

*Family Physician*

is brought to  
you through  
the generous  
support of  
Twin Cities  
Orthopedics.

**MINNESOTA FAMILY PHYSICIAN**

Minnesota Academy of Family Physicians  
600 South Highway 169, Suite 1680  
St. Louis Park, Minnesota 55426-1275  
(952) 542-0130 • (800) 999-8198

Prsrt Std  
U.S. Postage  
PAID  
Mpls, MN  
Permit No.  
3198



Please Recycle