

MINNESOTA FAMILY PHYSICIAN

Newsletter of the Minnesota Academy of Family Physicians

July/August 2008

A Significant Step Toward Health Care Reform

By Dave Renner, MAFP Legislative Representative

By far the issue of greatest importance, and at times most controversial, this past legislative session was health care reform. The culmination of all the work was the passage of Chapter 358. Some have called this act historic because it moves the state toward reforming our public health system, our delivery system, and our payment system to control costs, improve the health of the population, and improve access to care. The act begins to change payment systems to reward physicians for care coordination of those with chronic and complex conditions through the promotion of the health care home model. It rewards the provision of quality care through the development of pay for performance methodology that is valid, transparent, and standardized. It funds statewide health improvement grants to fight tobacco use and obesity. And, it expands access for low-income Minnesotans.

Passage of Chapter 358 is a remarkable step forward for our state, but the work is far from done. What this act does is lay out a road map for reform efforts that will take place over the next five years. The goals of this legislation include reducing the growth in health care spending 12 percent by the year 2015. This

represents a potential savings of about \$6.9 billion compared to baseline projections.



Much of that savings is expected to come from payment reform that rewards better care coordination of those with chronic conditions and by rewarding the medical home. But there is still work to be done on that. By July 1, 2009 the commissioners of Human Services and Health will develop and implement standards of certification for health care homes. The standards must emphasize, enhance, and encourage the use of primary care physicians, advance practice nurses and physician assistants; focus on delivering high-quality, efficient and effective care; encourage patient-centered care, including active participation by the patient and family in decision making; provide patients with a consistent, ongoing contact with a personal clinician, or team of clinicians; ensure the development of comprehensive care plans; encourage the use

Legislative - Continued on page 5

State Tar Wars Poster Contest Winner Announced

By Kristie Thorson, MAFP Communications Coordinator

Jordan Reinhart, a fourth-grader at St. Anthony Elementary School in New Ulm, MN, is the winner of the 2008 Minnesota Tar Wars Poster Contest.

Her poster, which states "Make Your Goal Smoke Free," shows a soccer goalie guarding the net.

Posters were judged by attendees of the 2008 MAFP Spring Refresher. Those voting were asked to rank the posters based on their artistry, creativity, originality and their ability to communicate a clear, positive message to remain tobacco-free.

Reinhart's poster will advance to the National Tar Wars



This poster by Jordan Reinhart of New Ulm received a first place award in the Minnesota Tar Wars Poster Contest.

Tar Wars - Continued on page 7

INSIDE

- ▶ **AAFP Live!**
Page 5
- ▶ **Residency Recruitment Event**
Page 6
- ▶ **Medical Home Word Search**
Page 8

REGULAR FEATURES

- ▶ **President's Message**
Page 3
- ▶ **What's New**
Page 4
- ▶ **Membership Report**
Page 4
- ▶ **Bulletin Board**
Page 9
- ▶ **Foundation Report**
Page 10
- ▶ **Practice Opportunities**
Page 11 - 15



Coming

Up

The Calendar

July 30 - Aug 2	National Conference of Residents & Medical Students, Kansas City
September 1	Labor Day - MAFP Office Closed
September 14 - 21	AAFP Annual Meeting, San Diego, CA
September 27	Residency Recruitment Event, University Radisson, Minneapolis
October 24	AAFP Live! - Minneapolis, Hyatt Regency Hotel
October 25	MAFP Board of Directors Meeting, St. Louis Park, MN

Continuing Education Courses

NRP Recertification Training

Dates: September 16, 2008
Sponsor: Allina Health System
Location: St. Francis Med Ctr, Shakopee
Registrar: 952-403-2284
Approved for 2 Prescribed Credits

9th Annual Psychiatry Review-Pleasure and Motivation: Addiction, Impulsivity, and Compulsivity

Dates: September 18-19, 2008
Sponsor: University of Minnesota
Location: Hyatt Regency, Minneapolis
Registrar: 612-626-7600
Online: www.cmecourses.umn.edu
Approved for 12.25 Prescribed Credits

Primary Care Medicine

Dates: September 18-19, 2008
Sponsor: HealthPartners
Location: Holiday Inn Metrodome, Minneapolis, MN
Registrar: 952-883-6225
Online: <http://imehealthpartners.com>
Number of credits pending

Ethics and Health Care Reform: Where is the Justice?

Dates: October 3, 2008
Sponsor: HealthPartners
Location: Wilder Center, St. Paul
Registrar: 952-883-6225
Online: <http://imehealthpartners.com>
Number of credits pending

Twin Cities Sports Medicine Conference

Dates: October 3-4, 2008
Sponsor: University of Minnesota
Location: Holiday Inn Select, Bloomington
Registrar: 612-626-7600
Approved for 11.25 Prescribed Credits

9th Annual Women's Health Conference

Dates: November 7, 2008
Sponsor: HealthPartners
Holiday Inn Metrodome, Minneapolis, MN
Registrar: 952-883-6225
Online: <http://imehealthpartners.com>
Number of credits pending

This issue of *Minnesota Family Physician* is brought to you through the generous support of HealthEast Medical Laboratory.



Minnesota Family Physician (ISSN 0279-6120) is published by the Minnesota Academy of Family Physicians six times per year. Except for official reports and announcements, no material in *Minnesota Family Physician* is to be construed as representing the policies or views of the Minnesota Academy of Family Physicians. The editors reserve the right to accept or reject any article or advertising matter.

Medical Editor

David Hutchinson, M.D.

Managing Editor

Kristie Thorson

Layout & Design

Kristie Thorson

Editorial copy and practice opportunity ads to be considered for the Sept./Oct. issue are due in the MAFP office by 8/27/08.

Minnesota Academy of Family Physicians

600 S. Hwy. 169, Suite 1680
St. Louis Park, Minnesota 55426
(952) 542-0130 • (800) 999-8198
Fax: (952) 542-0135
Email: office@mafp.org • Website: www.mafp.org

Officers

David Hutchinson M.D.
- *President*
Patricia Fontaine, M.D.
- *President-Elect*
Alan Olson, M.D.
- *Board Chair*
Raymond Christensen, M.D.
- *Treasurer*
Mohammad Tariq Fareed, M.D.
- *Officer-At-Large*
Terence Cahill, M.D.
- *Speaker of the House*
Philip Stoyke, M.D.
- *Vice Speaker*
Virginia Barzan, C.A.E.
- *Executive Vice President*

Directors

Daron Gersch, M.D.
- *Central Chapter*
Karen Karlinski, M.D.
- *East Metro Chapter*
Robert Koshnick, Jr., M.D.
- *Heart of the Lakes Chapter*
Carol Farchmin, M.D.
- *Lake Superior Chapter*
Robert Rutka, M.D.
- *Lake of the Woods Chapter*
Alan Olson, M.D.
- *Minnesota Valley Chapter*
To Be Determined
- *Park Region Chapter*
Phillip Holmes, M.D.
- *Range Chapter*
Gregory Angstman, M.D.
- *Southeast Chapter*
To Be Determined
- *Southern Chapter*
To Be Determined
- *Southwest Chapter*
Amy Bonifas, M.D.
- *West Metro Chapter*
William Nicholson, M.D.
- *Resident*
Elizabeth Menzel
- *Medical Student*

Staff

Lynn Balfour
- *Foundation Executive Director*
Kelly Bellomy
- *Membership Coordinator*
Katherine Carlson
- *Accountant/Office Coordinator*
Arlene Lensing
- *Associate Director*
Lisa Regehr
- *Conference Coordinator*
Kristie Thorson
- *Communications Coordinator*

Championing Change, and the Health Reform Movement

Healthcare providers aren't strangers to imposed change. It gets to be a way of life: new business alliances, new records systems, new coding requirements, new patient flow designs, new scheduling parameters, redistributed or repartitioned work duties, new therapeutics, new accountabilities... we navigate it all. Times of trial seem to intensify the opportunity for prognosticators and movers-and-shakers to present new ways of doing things. How we manage change, we're told, will define our success over the long term. So we do – we manage it.

Some of us heed the call to change easily, content to enjoy a shift in perspective, focus, even mission. Some of us with “stauncher” personalities have it tougher, feeling naturally less reactive, or just less willing to “move over.” I'd like to think that my own reflexes vary, according to circumstance. I mean, first, I'm a farm kid. I know that the earth cycles, and that some times are lean and some are flush. I know generally to weather tough times through self-reliance, belt-tightening, lowering expectations, adherence to my values, faith, and strength of long-term purpose. Kinder conditions are a few turns of calendar away. These things I've learned, and more grandly, I've been taught that such steadfastness will keep the world propped up, while others note that the sky is falling. Stay the course; don't get nudged off the balance beam. Oh, I don't mind my cheese getting moved. I don't really even need much cheese. But why waste energy reacting to those trying to move my cheese which is where it is for good reasons?

I'm not a change-monger, by nature, and I don't suffer gerrymandering well from others. So I sympathize with those of you who feel wearier of the Medical Home discussion than you do of the stream of ostensibly smaller changes in practice. ‘We're doing as well as we can,’ you might think – ‘stop meddling, you're going to muck it up, and you're making more work for the rest of us.’ I agree philosophically with those of you who believe that overall, things are the way they are for logical and usually purposeful reasons. The status quo has been designed and refined over time in ways that those without longitudinal understanding can't appreciate.

This isn't to say that I'm a blind defender of the status quo, though. Every structure can be redesigned for stronger performance, and every system for smoother function. Farm kids know that, too. Observation, analysis, and creativity should perpetually correct how we apply ourselves to the world. As my (very conservative) dad admits magnanimously, change isn't bad, change is in fact good – NOT to accommodate someone else's sense of order or aesthetic or their need to direct, but to make gradual and small improvements, and occasionally even to fully re-orient ourselves toward what it is we truly need to accomplish.

Such is my view of how we should assess health care at present. Mortified at the cost, redundancy, inaccuracy, self-serving nature, and technological and administrative weight of our current operating system, I've been one of those saying the sky is falling. I've remained animatedly excited by evidence

President's

Message

By David Hutchinson, M.D.



which validates my intuitive and empiric sense that comprehensive and coordinated care offered via the strengths embedded in relationships between patients and generalist physicians creates superior outcomes, at reduced cost, with greater patient satisfaction. As such, I've been writing and speaking actively about the need for change for four years, bolstered by an increasing national voice for the need to re-champion patients and primary care. Over that time, I've promoted, and tried to wrap my own mind around, the **Patient-Centered Medical Home** as the encompassing mechanism which will offer a potent mission of service and excellence to patients, will more fully value and utilize the skills that ALL types of providers can offer, while at the same time accommodating primary care clinicians' personal needs without loss of our effect.

This past legislative session was therefore, to some of us, momentous. Well, not as nearly momentous as we might first have been led to hope, but really – the growing push for reform in health care yielded tangible movement. The Queen Mary really can turn if enough people lean on it persistently enough. The House and Senate health reform bills of this past spring have committed us to change in intelligent and overdue ways. The legislation includes:

- A Commitment to Public Health Improvement – with a financial commitment to local resources aimed at curbing obesity and tobacco use
- Expanded Health Care Coverage – through both public and private insurers
- Promotion of the Medical Home/Health Care Home model of care – through public and private reimbursement for Care Coordination (with modifiers for patient complexity) and through a recognition system meant to champion ALL of the principles of the PC-MH
- A push for Administrative Efficiency and Accuracy – requiring EMR interoperability, and studying electronic prescribing and standardized claims processing
- A focus on Quality and Cost transparencies through payment incentives
- Exploration of issues involving workforce, benefits standards, coverage for long-term care workers, and increasing the voice of consumers in the reform process

President's Message - Continued on page 6

What's New

▶ MAFP Members in the Spotlight

Kathleen Brooks, M.D., was named Associate Dean for Primary Care and will be the acting director of the Rural Physician Associate Program at the University of Minnesota.

The American College of Physician Executives recently awarded Fellowship to **Benjamin Chaska, M.D.**, of Eden Prairie.

Alison Coulter, M.D., a family physician who practices at the Physicians Neck and Back Clinics in Coon Rapids, was featured in a segment of *Twin Cities Live (KSTP-TV)* in May. The story described how Dr. Coulter went beyond her responsibilities as a physician to help a patient in need. Dr. Coulter no longer treats the woman, but instead spends some of her time off at the woman's home helping with chores and watching her three children.

Carol Farchmin, M.D., was interviewed for a story on virtual consults that appeared in the *Star Tribune* on June 8th.

Richard Mulder, M.D., was interviewed for a story on the doctor of nursing certification that ran in the June 16th issue of *American Medical News*. The May issue of *Minnesota Medicine* focused on primary care and featured an article on the Medical Home.

Kathleen Brooks, M.D., and **George Schoephoerster, M.D.**, wrote articles for the issue. Several other MAFP members were also interviewed. If you missed it, check it out online at www.minnesotamedicine.com.

▶ New Committee Chair

Philip Stoyke, M.D., has been appointed to chair the MAFP Legislative Committee for 2008-09.

▶ AIM Group Visit Guide

A new step-by-step guide to conducting and getting paid for group visits with patients who have chronic conditions and are affected by overweight and obesity is now available. For more information, visit <http://chapters.aafp.org/online/execs/home/news/archives/june/aim.html>.

Membership Report May 1, 2008 - June 30, 2008

New Active Members

Wendell Bonner, M.D., Duluth
Kirsten Deutsch, M.D., Rochester
Victoria Hagstrom, M.D., Rochester
Susan Klee, M.D., Rochester
Michael Nguyen, M.D., Woodbury
Teresa Quinn, M.D., St. Louis Park
Michele Thieman, M.D., Walker
Jeri Wiedmeyer, M.D., Warren
Arthur Wineman, M.D., St. Paul



New Resident Members

Hennepin Co. Medical Center
Ruth -Sydney Forde, M.D.
Pat Inveen, M.D.

New Student Members

University of MN - Twin Cities
Cassandra McMillan
Lisa Sandvig
Tou Sue Vang

Congratulations and best wishes to recent member retirees!

Drs. Dan and Sue Benzie, retired this past spring after having spent more than 25 years in Moose Lake and serving patients at the Gateway Family Health Clinic. They plan to spend time with grandchildren and catch up in the garden and woodshop.

Robert Rafferty, M.D., retired after 40 years at the Buffalo Clinic. He plans to spend time with family, traveling and gardening.

Kirk Simpson, M.D., retired at the end of June. He spent the last 33 years at the Bloomington Lake Clinic in Mendota Heights. He was an active member of the West Metro Chapter and volunteered for many years on MAFP committees. Dr. Simpson says he plans to read a few books, play his banjo again, get a good night's sleep, and grow old with his wife, not regretting the things they did not do.

MAFP Membership

(As of 6/30/08)

Actives = 2,125
Residents = 231
Students = 457
Life = 241
Inactives = 41
Supporting = 3

Total = 3,098

Mark Your Calendar for AAFP Live!

FREE REGISTRATION/EARN CME CREDITS

Friday, October 24, 2008
Hyatt Minneapolis

7:15 a.m. Breakfast & Registration

8:15 a.m. Welcome

4:00 p.m. Adjourn
(Includes Lunch)

This conference covers six topics. Those confirmed so far include Hyperlipidemia, Immunizations, and Pain Management.

To register go to: www.aafp.org/aafplive/

*AAFP Live! is supported by Merck & Co., Inc.,
Merck/Schering-Plough Pharmaceuticals and Alpharma Inc.*



AAFP Launches New “Viral” Campaign

The AAFP Public Relations Department recently launched a “viral” campaign to promote new online videos highlighting the dynamic role of family medicine in today’s health care system. The AAFP encourages all members to take an active role in spreading this “virus.”

The video vignettes are posted on YouTube, Vimeo, Viddler, The Doctor’s Channel and other online video sites from which they can be embedded in a limitless number of web sites, blogs and electronic messages. The videos can also be viewed in the AAFP’s online Media Center at <http://www.aafp.org/online/en/home/media/multimedia/audio-and-video-files.html>.

The titles of the video vignettes are:

- The Specialty of Family Medicine (describes scope of practice)
- Family Medicine and Preventative Care
- Family Medicine and Chronic Disease Management
- Family Medicine and Health Information Technology
- Fixing Health Care: What Women Want (features the patient-centered medical home model of care)

The goal of this campaign is to create a timely, yet lasting, presence on the Internet for the AAFP and family medicine while educating key audiences about the role and value of the specialty.

Continued from page 1 - Legislative

of care coordinators; incorporate quality measurement; and encourage scientifically based health care.

The MAFP is actively involved in the work group developing these standards and we will need to be actively involved in promoting Medical Homes to our members.

Savings are also projected by changing the incentives in our payment systems by moving away from rewarding providers for doing more procedures or offering more services and toward a system that rewards the provider for providing better quality care and providing services that keep patients healthier. But before we can reward quality, the commissioner must develop a uniform method of calculating cost and quality through addressing the following issues: provider attribution of costs and quality, appropriate adjustment for catastrophic cases, risk adjustment mechanisms, the types of providers and types of services to include, adjustments for payment rate variations, what level of provider to be analyzed (physician, clinic, system level, etc.), payer mix adjustments, and other factors needed to ensure validity of the data. The MAFP will have to be involved in these important discussions.

Finally, if we are successful in promoting primary care we will have to address the expected health care workforce shortages. Chapter 358 directs the commissioner of health, in consultation with the health licensing board and the professional associations, to study changes necessary in health professional licensure to ensure full utilization of advance practice nurses, physician assistants, and other licensed health care professionals. These professionals would be used in the health care home and in primary care delivery. The MAFP has a direct interest in this work.

We can all celebrate the passage of historic legislation that promotes primary care, the medical home, and increases access for the uninsured, and we should. But, be aware that the work has just begun.

2008 Residency Recruitment Event – Made for Medical Students

Medical Students - this is your chance to meet with family medicine residency programs from Minnesota and throughout the nation. You can also take part in small group discussions led by experts on financial planning and navigating the MATCH.

This FREE event takes place on Saturday, September 27, 2008, from 9:00 a.m. until 12:30 p.m. at the Radisson Hotel on the University of Minnesota Campus.

Here's the Plan:

9:00 a.m. – 12:30 p.m.

Brunch

Visit Residency Programs
PRIZE DRAWINGS

10:30 a.m. – 12:30 p.m.

Small Group Presentations

- Financial Planning
- Navigating the Match

(sign-up for a 30-minute presentation slot when you arrive at the event)

Again, this event is FREE for medical students and their guests. Watch for a registration brochure in your mail. Online registration is available by visiting www.mafp.org. You can also register by phone by calling (800) 999-8198 or (952) 542-0130.

Prizes

The Residency Programs are giving away excellent prizes! The drawing will be held at 10:15 a.m. You must be present to win.

Carpool and We'll Pay for the Gas

Driving from Duluth or Mayo? Pack four students (counting *you*) into your vehicle and we'll pay for the gas.

Questions?

Call Lisa Regehr at (952) 542-0130, (800) 999-8198 or email her at lregehr@mafpp.org.

Continued from page 3 - President's Message

Health reform will be a work in progress. I'm confident in both the "work" and "progress" parts of that statement, now. It would be easy to look at the details of this legislation merely with worry – about increased administrative load, or imposed costs of change, or even about whether it just misses the boat. I acknowledge that it would be tragic, for example, if our efforts to champion patients and primary care through promotion of the PC-MH merely result in enhanced compensation to large health systems which can purchase/hire new practice infrastructure in order to meet simple, concrete definitions of Medical Home-ness. I agree that it would be tragic if new quality performance incentives lead to a focus on 'disease management,' rather than on holistic and longitudinal health outcomes. We still have work ahead of us. Jeff Schiff, M.D., director of the Minnesota Medical Home Learning Collaborative, and leader of a Medical Home/Care Coordination-defining work group at the DHS in which I participated, reminded me: "We know too well that we aren't going to get it all right the first time. There are too many stakeholders to bring along at once. But we have to set the right themes down, and take a good first step now while the political climate will support it, expecting to refine our efforts over several years."

I see this refinement work already occurring, even before implementation of this year's legislation. The national discussion about the Medical Home continues to refine itself. NCQA, the group which last October offered a first-version tool by which to measure how well a clinic or system is performing as a medical home, is already editing for inclusion of metrics for Personal Physician involvement in the Medical Home. The DHS and MDH remain tasked with defining measures of quality in practice outcomes, and with Medical

Home processes which will qualify practices for additional compensation. The legislatively created Health Care Reform Review Council which will include a rural practitioner and will observe reform implementation efforts. It will be crucial that we seek, as the MAFP plans to do, an active voice in these refinement discussions, in order to honor the real goals of reform suggested by evidence and world experience.

I want to exhort all of you to understand and embrace the work done so far by our policy advisors and legislators to begin to re-craft health care in Minnesota, and to appreciate yourselves for supporting the health professional voices which helped to educate and drive the debate over the past several years. In the words of George Schoephoerster, M.D., president-elect of the MMA and past-president of the MAFP, "We all need to stand up and cheer... and then figure out how to become part of, and lead others to, this better world through practice transformation."



David Hutchinson, M.D., was elected to serve as the MAFP President from April 2008 - April 2009. He is practicing family physician at the Duluth Family Practice Center and an Assistant Director with the the Duluth Family Practice Residency Program. Dr. Hutchinson lives in Duluth with his wife and four children. Comments or thoughts regarding his President's Message can be emailed to office@mafpp.org.

Continued from page 1 - Tar Wars

Poster Contest which will be held this summer in Washington, D.C. The United Hospital Foundation donated money to pay for Reinhart and one adult family member to make the trip.

The Tar Wars program is taught by MAFP members who share the Tar Wars message in classrooms across the state.



Thank you to the United Hospital Foundation for providing funding to send our Minnesota Poster Contest winner to Washington, D.C., to participate in the national contest!

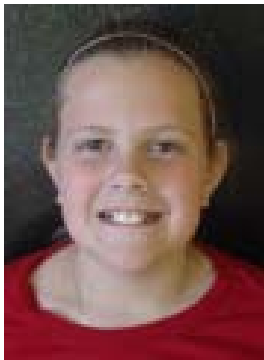
Tar Wars®

Thank you to all family physicians, family medicine residents, and medical students who made Tar Wars presentations during the 2007-2008 school year:

- Joan Benner, M.D.
- Sarah Hammes, M.D.
- Stephanie Hunstad, M.D.
- Patrick Inveen, M.D.
- Frani Knowles, M.D.
- Marit Knutson
- Beth Larson, M.D.
- Lynn Manning, M.D.
- Amanda McDonald, M.D.
- Jaimee McPadden, M.D.
- Jamey Sotis, M.D.
- Junior Tshibangu
- Allison Wong, M.D.
- Tou Yang
- Angel Yap, M.D.

Tar Wars®

2008 Minnesota Poster Contest



Jordan Reinhart,
St. Anthony
Elementary,
New Ulm, MN

Volunteer Presenter:
Frani Knowles, M.D.

Second Place



Megan Riel,
Scandia Elementary,
Scandia, MN

Volunteer Presenter:
Joan Benner, M.D.



First Place



Third Place

Kate Schaaf,
Scandia
Elementary,
Scandia, MN

Volunteer
Presenter:
Joan Benner,
M.D.



Word Search **What Is A Medical Home?**

T F Q E S U D H N P R O V I D E R H I C
C G N V R P D Y Q A Z U K J E F O Y N X
X O I L Y H I Z T T Q B U R E U T P N N
D V M B M K E H Y I T N E M T I M M O C
I F T M P H C A S E L S O D L U A P V B
A L I P U E I C L N U I D I E J L R A T
P C B P N N R X S T O C B D T L Y O T G
T W Y V O C I S J C H I U A C N C A I Y
U O Q I I O C C O E S C T U L M E C V T
J K X K T U C T A N A E A A W I G T E I
H B M M A R Y N O T A U S R L A A I T L
I K X O N A J P I E I L B F E E Y V H A
S F E Z I G S O P R I O R I T Y R E A U
T O L P D E N P R E V E N T A T I V E Q
O Q I A R M G A P D E Z I M O T S U C Q
R V E L O E U C P K A U H Q W C Y J V F
Y G O L O N H C E T D L L V V L Z B W L
C R C S C T N E M E G A N A M T P E I O
I T J G H Z P S C G X V S X V P Y A A D
T P O C Q C A S C Q C H W X A O C D N N

1. ACCESS
2. ATTENTION
3. AVAILABILITY
4. COMMITMENT
5. COMMUNICATION
6. COORDINATION
7. CUSTOMIZED
8. EDUCATION
9. EHR
10. ENCOURAGEMENT
11. HEALTHCARE
12. HISTORY
13. INNOVATIVE
14. MANAGEMENT
15. PATIENTCENTERED
16. PERSONAL
17. PREVENTATIVE
18. PRIORITY
19. PROACTIVE
20. PROVIDER
21. QUALITY
22. RELATIONSHIPS
23. RESPONSIBILITY
24. TECHNOLOGY
25. VALUE

**Word Search Solution on Page 9*



THE BULLETIN BOARD



Minnesota Mandates EHR by 2015

Did you know that all hospitals and health care providers in Minnesota must have an interoperable electronic health records system in place by 2015?

The Statewide Implementation Plan for Interoperable EHRs is now available on-line and download at the Minnesota e-Health Initiative web site: www.health.state.mn.us/e-health/ under 'Announcements'.

The plan:

- Identifies a model for achieving the 2015 interoperable EHR mandate.
- Provides practical guidance to providers and provider organizations on what they can do now to overcome barriers and accelerate progress in adopting interoperable EHRs.
- Provides links to tested planning and implementation tools.

The plan includes two guides:

- Guide 1: Addressing Common Barriers to EHR Adoption - A Practical Guide
- Guide 2: e-Health Standards Recommended for Use in Minnesota

Educational Tools To Help Manage Staph Infections

The Minnesota Antibiotic Resistance Collaborative (MARC) has developed two educational tools to assist clinicians in the management of patients with *Staphylococcus aureus* skin and soft tissue infections, including those due to MRSA. The MARC is offering these materials at no charge to clinics. The first tool is entitled 'Learning About MRSA: A Guide for Patients' and is a booklet that describes transmission, treatment and prevention of *Staphylococcus aureus* and MRSA skin infections at home. The second tool is a tear-off pad that can be used by health professionals when diagnosing a staph infection. The materials are available in English, Spanish, Somali and Hmong. To order copies of the booklet and tear-off pad, visit www.minnesotaarc.org or call 651-201-5414.

2008 AAFP Scientific Assembly

The 2008 AAFP Scientific Assembly will be held in San Diego, CA. A full-schedule, registration and hotel information can be found online at <http://www.aafp.org/online/en/home/cme/aafpcourses/conferences/assembly/2008reg.html>.

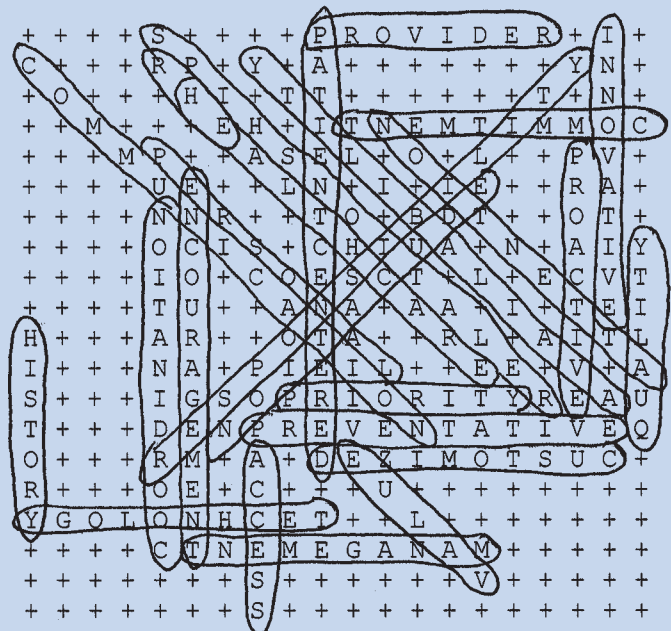
Keep Minnesotans Right Side Up!

This is the Minnesota Falls Prevention Initiative slogan to help reduce falls among older Minnesotans. It is not just a slogan...a major goal of the Initiative is to spread the message to older adults and professionals that falls are not a normal part of aging. Falls can be prevented by following simple suggestions and ideas. Help us spread the message by visiting the Minnesota Falls Prevention website at: <http://www.mnfallsprevention.org> and download free handouts that will keep Minnesotans right side up. Give the handouts to your clients, patients, colleagues and anyone that would benefit from being "falls-free." The handouts are tested with older adults, contain innovative and simple suggestions to help older adults stay independent, and are available in English and Spanish.

Fifth Annual National Telehealth Conference

Registration is open for the Fifth Annual National Telehealth Conference. The event will be held September 25 - 27, 2008, at the International Airport Hilton Hotel in Bloomington, MN. The conference is sponsored by the Children's Physician Network, a Minnesota non-profit organization. The intended audience is office and call center triage nurses, physicians and administrators. For more information and to view the e-brochure, go to www.cpnonline.org.

Solution to Medical Home Word Search on Page 8





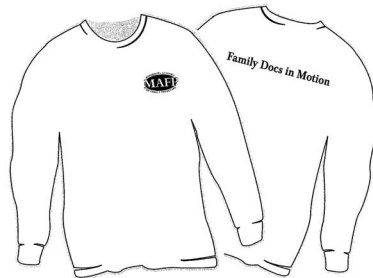
MINNESOTA ACADEMY OF FAMILY PHYSICIANS FOUNDATION NEWS



The mission of the MAFP Foundation is to support family physician health care delivery, research and education, and to promote the specialty of family medicine.

“Family Docs in Motion” Shirts Available

Don't delay in ordering your “Family Docs in Motion” sports shirt as we are coming to the end of our inventory. The Sports Tek shirt is dry mesh, double needle, wick moisture, 100% poly double mesh, and comes in long or short sleeve – perfect for biking, running, or walking. Shirts sell for \$29 (plus \$2 for S/H) with a portion of each sale used to advance the mission and work of the Foundation. Wearing the shirt is a great advertisement for the MAFP and promotes physical fitness. You'll find the MAFP logo on the front and the phrase “Family Docs in Motion” on the back. To place your shirt order on-line please visit www.mafp.org or call 952-542-0130 or 800-999-8198.



Foundation Board Announces Programs and Services for 2008-09

The Foundation's Board of Directors approved the following initiatives and grants for the coming year. These programs align with the mission of the Foundation to support family physician health care delivery, research, and education; and to promote the specialty of family medicine:

New Initiatives:

Coordinating Care of Chronic Kidney Disease Patients: Roles and Communication Model for Family Physicians and Nephrologists. A collaboration with Stratis Health.

Protect Patients from Pertussis. Prevent the transmission of pertussis to patients by applying Advisory Committee on Immunization Practices healthcare worker recommendations for Tdap vaccine to family physicians and health care workers with direct patient contact.

Family Medicine Resident Research Award. Residents will be eligible to apply for a grant to design and implement a research project related to family medicine.

Ongoing Initiatives:

Teen Link Program: Reducing Childhood Obesity. Grant to the YWCA.

David Mersy, M.D. Medical Student Externship Program. Three grants will be awarded in 2009 to medical students conducting summer research projects.

MAFP Research Network. A grant to support their practice-based research work in Minnesota.

Prescription Drug Assistance/Rx Connect Program. Serve seniors in need of low cost prescription drugs. A grant to the Minnesota Board on Aging.

Medical Students Enjoy Lunch and Presentations

In May, the Foundation's Executive Director Lynn Balfour and MAFP Conference Coordinator Lisa Regehr were invited to speak to medical students at the University of Minnesota – Duluth. While nearly all the students already had plans for this summer, they did hear how they might spend next summer working on a research project as part of the 2009 David Mersy, M.D. Medical Student Externship Program. In addition, students were invited to attend the AAFP Annual Conference held in Kansas City, MO. To learn more about the Foundation, please visit www.mafp.org/foundation.asp or call 952-5420130.



Family Medicine Interest Group members enjoy lunch presentations

2,800+ Translated Health Documents Available at No Cost

For the past few years the MAFP Foundation has been a dues paying member of the *Exchange*, and as such, MAFP members have free access to the on-line library of 2,800+ health documents that have been translated in up to 16 different languages spoken in Minnesota.

Recently a 3rd year family medicine resident graduating from United Family Practice Health Center tapped into the electronic *Exchange* library to complete her project *Multilingual-Multicultural Patient Education Materials*.

Searching by language or topic is easy when you use the *Exchange*. Popular documents include these, and more:

- Advance Health Care Directive
- Procedural Consent Form
- When to Get Shots for Children and Adolescents
- Asthma Action Plan
- Cholesterol Test Results Form
- Animal Bites and Scratches

Accessing these documents may help to decrease the cost of interpretive services incurred when working with patients with Limited English Proficiency (LEP). Check out the *Exchange* at www.health-exchange.net and click on “library.” Our log-in name is “family” and the password is “maf.”



Affiliated Community Medical Centers, Willmar, MN: Physician-owned multi specialty clinic is seeking a full-time physician to join the Family Practice Department in their Willmar, Redwood Falls, Granite Falls, Marshall, Litchfield and Benson affiliates. These positions offer a guaranteed salary plus production incentive and an outstanding benefit package. For further information please contact Kari Bredberg, Physician Recruitment Coordinator, Affiliated Community Medical Centers, 101 Willmar Avenue SW, Willmar, MN 56201, 320-231-6366 or e-mail karib@acmc.com Website: www.acmc.com.

HealthEast Care System of St. Paul, MN, named one of the “Best Places to Work” in Minnesota three years in a row, is one of the Midwest’s premier hospital and clinic systems. Due to new growth, we currently have opportunities for **Family Medicine Physicians** at seven of our clinics, with and without OB. We also seek **Family Medicine Hospitalists** at our four hospitals (St. Joseph’s, St. John’s, Woodwinds and Bethesda). We offer competitive compensation and benefit packages, family friendly schedules, signing bonus and relocation assistance. For details, visit www.healtheast.org/careers or contact Kathy Nikunen, Physician Recruitment Specialist, at 651-326-2009 or kenikunen@healtheast.org.

Cuyuna Regional Medical Center – Comprehensive Health Care Meets Lake Country Living. Central Lakes Medical Clinic, P.A. in Crosby, MN is seeking BC/BE Family Medicine physicians with OB to join our multi-specialty group. Crosby is located 14 miles northeast of Brainerd/Baxter within the coveted Brainerd Lakes area. Be part of an independent practice while working collaboratively with our comprehensive and progressive medical campus. To learn more about our exciting opportunities, call Becky at 877-546-2308 or email her at rtbiesfeld@cuyunamed.org. Visit our websites at www.cuyunamed.org and www.mimismn.org.

Family Medical Center has an opportunity for a family practitioner who wishes to practice with a privately owned physician driven multi-specialty group practice. Family Medical Center, Little Falls, Minnesota is a 17 physician group practice; 10 FPs, 2 IMs, 1Ped, 2 GSs and 2 Ob/Gyns. Shareholder status is available after one year. Call schedule is 1:10, hospital provides ED coverage. The opportunity provides a competitive salary with bonus opportunity and an excellent retirement plan. Hospital is highly supportive and provides relocation assistance, signing bonus and two-year income guarantee. Little Falls is located in Central Minnesota on the Mississippi River. Abundant outdoor activities prevail as well as an excellent family centered quality of life. Contact us at: www.fmclf.com ddvorak@fmclf.com.

Altru Health System, a not-for-profit 260 bed Level II Trauma designated healthcare system in Grand Forks, ND, has opportunities for BC/BE physicians in the following specialties: Critical Care/Pulmonology, Cardiology (Interventional), Gastroenterology, Internal Medicine, Nephrology, Diagnostic Radiology, Dermatology, Rheumatology, Orthopedic Surgery, Family Medicine and Psychiatry. Join 188 physicians representing 44 specialties in a community of 65,000, serving a primary care area of over 250,000. Teaching opportunities available through the University of North Dakota School of Medicine. Altru Health System also has physician opportunities in two of our branch locations including the beautiful lake communities of Devils Lake, ND and Warroad, MN on Lake of the Woods. Specialties available in these areas include: Family Medicine - Devils Lake and Warroad, Internal Medicine – Devils Lake, General Surgeon – Devils Lake. Altru offers extensive and competitive salary and benefits packages. For more information on these opportunities contact: Kerri Hjelmstad, Altru Health System, PO Box 6003, Grand Forks, ND 58201-6003. Phone: 1-800-437-5373 ext. 6596 Fax: 701-780-6641 Email: khjelmstad@altru.org, www.altru.org.

HealthPartners Medical Group is currently seeking full-time BC/BE Family Medicine physicians (with and without OB) for the following primary care clinic sites: **North Suburban Family Physicians Clinic - Roseville:** Full-range family medicine with or w/o OB, hospital call and rounding are required. **HealthPartners Arden Hills Clinic:** Experience or an interest in geriatrics is preferred. Adult-focused practice, no OB, hospital call and rounding are optional. **HealthPartners Maplewood Clinic:** Adult-focused practice, no OB. Hospital call and rounding are optional. We offer a competitive salary, an excellent benefit package, paid malpractice and a commitment to providing exceptional patient care. For more information contact diane.m.collins@healthpartners.com or call (952) 883-5453, toll-free: (800) 472-4695. EO Employer. www.healthpartners.jobs

The New Ulm Medical Center & the Physicians Group of New Ulm is seeking a BC/BE Family Practitioner to join our team of 17 primary care physicians (with multi-specialty services on site) in our newly expanded clinic! We currently have a need for 1 FP (without OB) in clinic practice (1:11 call). We are open to part- or full-time candidates. New Ulm is nestled just 90 miles southwest of the Twin Cities, in the heart of the scenic Minnesota River Valley. The community is home to 13,500 people and boasts a thriving, diverse economy with a healthy mix of retail, manufacturing and industry. New Ulm is famous for its authentic German heritage and with all of the festivals, historic monuments, attractions, shopping and many cultural events. Exceptional medical access and three school systems, complimented by numerous parks, safe streets and abundant recreational opportunities make New Ulm a great place to settle down and raise a family. For more information, please contact Kaitlin Osborn at Kaitlin.Osborn@allina.com / 1-800.248.4921 or view all of our openings at www.allina.com. EOE

Midwest Family Practice Opportunity: Balance life and patient care. Group practice opportunity for BC/BE Family Practice physician in scenic Winona, MN. Opportunity offers single-hospital setting, competitive compensation and the opportunity to pursue individual medical interests while balancing professional and personal life. Physician would join the medical staff of Community Memorial Hospital, which is linked to area healthcare providers by a community-wide Electronic Medical Record. Bordered by bluffs and the Mississippi river, Winona boasts good schools, two universities, international businesses and bountiful recreational and cultural opportunities. No J1 opportunities. Contact: Cathy Fangman, 855 Mankato Avenue, Winona, MN 55987. Phone: (800) 944-3960, ext. 4301; Website: www.winonahealth.org; Email: cfangman@winonahealth.org.

Urban community clinic organization seeks **compassionate, experienced family physicians** for expanded staff positions. Option for OB and participation in hospital medical attending. Primary care internist, pediatrician, or meds/peds also considered. Qualified candidates will be BE/BC and desire to work in a diverse community-based setting. WSCHS is a FQHC serving 35,000 patients annually at 18 medical, dental, homeless, public housing, and school-based clinic sites located in St. Paul. WSCHS serves large Latino, Hmong, immigrant, and refugee populations. Bilingual/bicultural candidates are strongly encouraged to apply. Opportunity for loan repayment. Resumes/CVs to Human Resources, West Side Community Health Services, 153 Cesar Chavez Street, St. Paul, MN 55107; fax 651-602-7517; or email hr@westsidechs.org.

Lake City Medical Center – Mayo Health System is seeking family medicine physicians to join our compassionate, high quality and nationally award-winning team of health care professionals. A physician-led family practice group, we strive for personal, compassionate health care supported by advanced technology. Our main campus, located in Lake City, Minnesota, houses our clinic, hospital and nursing home. We also have three off-campus clinics in Wabasha and Plainview, Minnesota and Alma, Wisconsin. Lake City Medical Center offers a competitive salary and benefits package, along with a friendly and rewarding work environment. For more information, contact Cheri Kramer, chief administrative officer, 651-345-3321.

HealthPartners Central Minnesota Clinics (HPCMC), a well-established multi-specialty group located in the award winning “Most Liveable City” of St. Cloud, MN, is now actively looking for BC/BE Family Medicine Physicians with OB to join its team of experienced providers. This is an excellent opportunity both for an experienced physician or a new resident. Located just 55 miles northwest of the Minneapolis/St. Paul metro area, this growing community of 125,000 enjoys a high quality of life with low cost of living. HPCMC offers call 1:10, fully-functional electronic medical record, competitive salary with productivity, full benefits package, and paid malpractice. If you are interested in this rewarding professional opportunity, send CV to: Kathy Cumming O’Hara, HealthPartners Central Minnesota Clinics, 1245 15th St. No, St. Cloud, MN 56303, phone: 800-370-0570 Ext. 2007, email: kcummingohara@hpcmc.com.

Fairview Health Services seeks family medicine physicians for inpatient/outpatient or outpatient-only practices. Enjoy 4-day workweeks and optional OB. Experience accessible specialist consultations and onsite lab and radiology. Work and live in vibrant communities: urban, suburban and rural practice opportunities meet your and your families’ needs. Enjoy an initial income guarantee with productivity component and a fantastic benefit package, including malpractice insurance. Shape your practice to fit your life as a part of our nationally recognized, patient-centered, evidence-based care team. Visit fairview.org/physicians to explore our current opportunities, then apply online, or call Bridgett Gawlik at 800-842-6469 or e-mail recruit1@fairview.org. EEO/AA Employer.

Park Nicollet Clinic is seeking BE/BC Family Medicine Physicians to join its multispecialty group in Minneapolis. Our Family Medicine department provides comprehensive services in health promotion, screening, diagnosis and disease management at 17 Park Nicollet Clinic locations in Minneapolis and surrounding suburban communities. It is our goal to provide care for most of the entire family’s health care needs. Practice options include participating in our hospital service or 100% outpatient practice. Our integrated health care system, including Park Nicollet Clinic and Methodist Hospital, is recognized locally and nationally for great care and leadership. Share your expertise in an environment that supports new treatments and innovations while embracing a strong work-life balance. For immediate consideration, please send CV to: Missy Fisher, Director Clinician Recruitment, Park Nicollet Health Services, 3800 Park Nicollet Boulevard, St. Louis Park, MN 55416. For more information contact Ms. Fisher at (952) 993-6025 or (888) 437-5004; email Melissa.Fisher@parknicollet.com.

Urgent Care Physician – Park Nicollet Clinic: Park Nicollet Clinic is seeking full-time BE/BC Family Medicine Physicians to join our Urgent Care Department. We offer Urgent Care services at six of our clinics. We invite you to share your expertise in an environment that supports flexible scheduling and a strong work-life balance. Our integrated health care system and EMR, including Methodist Hospital, is recognized locally and nationally for great care and leadership. Send CV to: Missy Fisher, Park Nicollet Health Services, 3800 Park Nicollet Boulevard, St. Louis Park, MN 55416, phone 952-993-6025, email: fishem@parknicollet.com. To learn more or apply online, visit parknicolletphysician.jobs. AA/EOE

Tri-County Hospital seeks a BC/BE Family Practice Physician to join our growing regional health care system. 4/days week, 6.5 scheduled hours/day, 46 weeks/year. No OB required. No Call. Guaranteed salary plus production incentive, liability coverage, relocation expenses, and competitive benefits. Excellent schools, unlimited seasonal sports activities, numerous artistic opportunities and miles of lakeshore are all part of the attraction in this region. Located in the heart of north central MN lake country – just 2 ½ hours from the Twin Cities. Please contact Lori Gress, Tri-County Hospital, 415 North Jefferson, Wadena, MN 56482. 218-631-7462 or 218-639-0572 cell. Email: lori.gress@tricityhospital.org.

Outstanding Twin City Opportunity. Johnson Street Medical Clinic is a Twin City independent medical clinic looking for exceptional physicians who want to practice excellent medicine their way rather than in a corporate style. We offer the setting, management and support that will assist you to realize your dreams. Practicing medicine should be both personally and financially rewarding – and it is at Johnson Street Medical Clinic. Please fax your CV to (612) 788-4930 or give us a call at (612) 782-0900. All conversations will be held in the strictest of confidence.

Luther Midelfort-Mayo Health System in Chetek, Wisconsin is seeking a physician BC/BE in Family Medicine to join an established clinic. OB required. Call 1:13. OB call 1:6. Luther Midelfort-Mayo Health System is a 225 physician-directed, fully integrated multi-specialty clinic and hospital owned by the Mayo Clinic. Luther Midelfort physicians practice evidenced-based, protocol-driven medicine. Electronic and on-line resources make it possible to practice state-of-the-art medicine. Chetek is a thriving community with an excellent educational system located 45 minutes north of Eau Claire, WI. Contact Cyndi Edwards, 800-573-2580; edwards.cyndi@mayo.edu; fax 715-838-6192; or www.luthermidelfort.org.

Hospitalist opportunities available for Family Practice physicians within Allina Hospitals & Clinics at United Hospital in St. Paul; Cambridge Medical Center in Cambridge; and Regina Medical Center in Hastings, MN. Full time and part time options available. No call. Block schedule at United Hospital. Day schedule at Regina and Cambridge Medical Center with 1 weekend a month at Cambridge. Please contact us for more information or visit our website at www.allina.com. Contact Allina Physician Recruitment Services via email at recruit@allina.com or phone: 612.262.4584 / 1.800.248.4921. EOE.

Red Cedar Medical Center-Mayo Health System in Menomonie, Wisconsin, is seeking a physician BC/BE in Family Medicine. OB is optional. Call of 1:10. Opportunity to moonlight in Red Cedar E.R. Two-year salary guarantee and complete benefits package. Red Cedar Medical Center is a vibrant 34-physician state-of-the-art, multi-specialty clinic and a 25-bed critical access hospital located one hour east of Minneapolis and ½ hour west of Eau Claire. Menomonie is home to the 7,500 students at the University of Wisconsin-Stout. Perched on the banks of Lake Menomin, the community offers strong schools and safe neighborhoods in a beautiful setting. Contact Cyndi Edwards, 1-800-573-2580; fax 715-838-6192; e-mail Edwards.cyndi@mayo.edu or www.rcmc-mhs.org.

Luther Midelfort – Mayo Health System in Eau Claire, Wisconsin, is seeking a physician BC/BE in Family Medicine for a full-time, outpatient practice. “Phone” call of 1:23 and one weekend in Urgent Care every 23rd weekend. Compensated on hourly basis for Urgent Care hours. Family Medicine Department recently moved to a brand new clinic addition. In partnership with Mayo Clinic, Luther Midelfort is a physician-directed, vertically integrated hospital and multispecialty clinic based in Eau Claire, WI. With interest, please contact Cyndi Edwards, 800-573-2580; fax 715-838-6192; e-mail edwards.cyndi@mayo.edu. Visit our website at www.luthermidelfort.org.

MENOMONIE WISCONSIN: Red Cedar Medical Center – Mayo Health System, an integrated 25-bed critical access hospital and 34-physician multi-specialty group, is seeking a physician **BC/BE in Emergency Medicine, Internal Medicine (experience treating children) or Family Medicine** for our Emergency Department and Urgent Care. 8,500 ER visits coupled with 17,000 urgent care visits are shared by physicians and mid-level providers. Twelve, 12-hour shifts per month. Competitive compensation and complete benefits package. Menomonie, located 1 hour east of Minneapolis/St. Paul and ½ hour west of Eau Claire, WI, is a university community of 15,000. For more information, contact Cyndi Edwards, 800-573-2580; fax 715-838-6192; e-mail edwards.cyndi@mayo.edu; or you may visit our website at www.rcmc-mhs.org.

Bloomer, WI: Luther Midelfort Chippewa Valley – Mayo Health System is seeking a **BC/BE Family Practitioner or BC/BE Med-Peds** with interest in both in/outpatient care opportunities. Pre and post natal care at this site but NO deliveries. Call of 1:5. No first call in the E.D. Call involves back up for mid-levels in the E.D. and is compensated. Moonlighting in the E.D. is optional and compensated on an hourly basis. Bloomer, a growing community 3,500, offers strong schools, many four-season recreational opportunities, and easy access to higher education. Contact Cyndi Edwards, 800-573-2580; fax 715-838-6192; e-mail edwards.cyndi@mayo.edu or you may visit our website at www.luthermidelfort.org.

Melrose – Loan repayment (specified amount) over five years. Seeking a BC/BE family medicine physician to join six others with an opportunity to practice OB in a community of 5,700. The clinic is attached to a 28-bed, critical access hospital ranked in the top 5% for financial outcomes. \$9 million clinic/hospital expansion planned. Not a health profession shortage area. CentraCare Clinic, a physician-led group with more than 20 specialties and 190 physicians, offers outreach services to 25 communities and a referral population of 640,000. The system includes a regional medical center, two rural hospitals, 11 clinics and four long-term care facilities. Competitive compensation and benefit package. www.centracare.com Contact: Cassie Tinius, Recruiter, 1406 Sixth Avenue North, St. Cloud, MN 56303; 800-835-6652, ext. 57085; Fax 320-255-5722; Email: tiniusc@centracare.com.

Long Prairie – J-1 visa applications accepted; health profession shortage area. Loan repayment (specified amount) over five years. BE/BC family medicine candidates (with OB training preferred). Join a group of providers in a community of 7,000. Call is 1:4-1:6 as positions fill (95% as P.A. backup). Clinic is attached to a 34-bed, critical access hospital. CentraCare Clinic, a physician-led group with more than 20 specialties and 190 physicians, offers outreach services to 25 communities and a referral population of 640,000. The system includes a regional medical center, two rural hospitals, 11 clinics and four long-term care facilities. Competitive compensation and benefit package. www.centracare.com Contact: Cassie Tinius, Recruiter, 1406 Sixth Avenue North, St. Cloud, MN 56303; 800-835-6652, ext. 57085; Fax 320-255-5722; Email: tiniusc@centracare.com.

New clinic, experienced system: Looking for a Family Medicine physician to join a new clinic in Big Lake, Minn. The latest technology allows physicians to provide high quality, personalized care. Big Lake, with an area population of 15,581, is located approximately 30 minutes from St. Cloud and 35 minutes from Minneapolis. Natural amenities such as lakes, the Mississippi and Elk Rivers, trail systems, parks, a tremendous labor force and easy access to major roads make Big Lake ideal. This community's industrial base balances the rapid residential growth. For more information, contact: Cassie Tinius, Physician Recruitment & Relations, St. Cloud Hospital. Phone: 800-835-6652 ext. 57085; Email: tiniusc@centracare.com, Web: www.centracare.com.

St. Cloud, Minnesota: Join 18 family medicine physicians at a clinic located within minutes of a regional hospital. OB experience is preferred. In the heart of lake country, St. Cloud is a family-oriented community with a population of nearly 125,000. The community offers numerous four-season recreational activities, sporting and cultural events. It is located just 60 miles northwest of Minneapolis/St. Paul. A variety of public and private schools provide high quality options for elementary and secondary education. Four local colleges provide outstanding higher education opportunities. Competitive compensation and benefits package. Contact: Cassie Tinius, 1406 Sixth Avenue North, St. Cloud, MN 56303. 800-835-6652, ext. 57085 Fax 320-255-5722 Email: tiniusc@centracare.com www.centracare.com.

Becker, Minnesota - Small-town charm, big city services! Join a three-physician group in a rapidly growing city. Our recently expanded clinic with room for five providers offers physical therapy and an on-site pharmacy. Call is 1:18. Hospitalists can assist with St. Cloud Hospital admissions. Becker, located only 45 minutes from Minneapolis/St. Paul, has a population of 8,800 and a service area of 145,500. It has excellent schools, a community center, golf course and the world's largest furniture store! Competitive compensation and benefits package. Contact: Cassie Tinius 1406 Sixth Avenue North, St. Cloud, MN 56303. 800-835-6652, ext. 57085 Fax 320-255-5722 Email: tiniusc@centracare.com www.centracare.com.

Aspen Medical Group, a division of Allina Hospitals & Clinics, located in St. Paul, Minnesota, seeks full time, part time and moonlighting BC/BE family medicine physicians to join our *Urgent Care* Clinics in Bloomington, Inver Grove Heights, Maplewood and St. Paul. Full Time consists of 31 hours/week, with a combination of days, evenings and weekend hours. Part time and Moonlighting consists of evening and weekend hours. Our clinics are fully staffed with lab, X-ray, MRI, CT, nursing staff and on-call specialists. All candidates must have a MN license and DEA registration. Will consider 2nd and 3rd year residents. *Full time / Part time Family Medicine, OB & No OB, opportunities* are available at the Aspen clinics located in Highland Park, Maplewood, St. Paul, Inver Grove Heights (inpatient & outpatient or outpatient only), and Minneapolis (outpatient only). Apply online at www.aspenmed.org, or contact Julie Juba at 866.415.2600, via email at jjuba@aspenmed.org or fax your CV to 651.642.2796.

Outstanding Upper Midwest Opportunities. **MeritCare Medical Group**, a 400+physician multi-specialty group practice based in Fargo, ND is seeking BC/BE family medicine physicians. Excellent opportunities are available in several communities in eastern North Dakota and the lake country of western Minnesota. Communities range in size from 9,000 to 18,000. Good call arrangements and modern well-managed community hospitals. OB is preferred but not required. Immigration and state licensure requirements vary based on individual credentials. MeritCare has legal expertise available to provide guidance through these issues. Excellent salary and full benefits is being offered, paid malpractice, relocation allowance and immigration financial assistance is available as well as starting incentives available at most sites. To learn more visit our website at www.meritcare.com or contact: Jill Gilleshammer, Physician Recruiter, Phone: 701-280-4851, Fax: 701-280-4136, Email: Jill.Gilleshammer@meritcare.com.

Interested in joining a vibrant, competent, highly respected and fun-loving staff of Family Medicine Physicians and a Nurse Practitioner? **Sawtooth Mountain Clinic, Inc.** might be the place for you! Situated on the shore of Lake Superior in northeastern MN, bordering the Boundary Waters Canoe Area and Quetico Provincial Park! Live, work and play all in this illustrious northwoods country. Our "search" is for a **BE/BC Family Medicine Physician**. SMC is a federally funded Community Health Center, servicing all of Cook County, MN, with clinic office hours from Monday-Saturday & services provided at two satellite clinics. Physicians also provide in-patient care at the North Shore Hospital and care to residents of the adjoining Care Center. Call, email or fax inquiries/resumes to Sue Nordman, COO – sue@sawtoothmountainclinic.org, phone: 218-387-2330 ext. 31 or fax 218-387-1278. We look forward to meeting you!

Springfield Medical Center/Mayo Health System seeks a BE/BC Family Practice Physician with OB to join our Mayo-owned regional medical center. An employed position, competitive salary, excellent benefits, paid malpractice, paid relocation, and generous CME. Springfield is located on highway 14 just 60 mile west of Mankato on the "Laura Ingalls Wilder Memorial Highway." Springfield is a wonderful upper mid-west community with excellent schools with a population of 2,200, four-season recreational opportunities in safe friendly community. We offer both a satisfying professional career and an excellent quality of life in Southern Minnesota. Contact: Jo Montemurno Phone: 866-625-713. Email: montemurno.jo@mayo.edu.

St. Peter Clinic/Mayo Health System seeks a BE/BC Family Practice Physician with OB optional to join our Mayo-owned regional medical center. Call 1:5. Employed position with a competitive salary, excellent benefits, paid malpractice, paid relocation and generous CME. The beauty and refuge of the Minnesota River Valley draws people to St. Peter (pop. 10,000). Education is a mainstay of St. Peter, which is home to Gustavus Adolphus College. St. Peter offers small town life while being only an hour from Minneapolis. Recreational opportunities are plenty in St. Peter. Contact: Jo Montemurno, 866-625-7131; montemurno.jo@mayo.edu; fax: 507-625-4424.

Champlin Urgent Care: V-Kare Clinic seeks board certified primary care physicians, nurse practitioners and physician assistant for evening and weekend positions. Fax: 763-323-1027 E-mail: drhussain@vkare.com.

North Memorial is presently recruiting for BC/BE family physicians to join several of our owned and affiliated family practice clinics. Practice opportunity locations include Brooklyn Park, Robbinsdale, Crystal, Maple Grove, Minneapolis and others. These are excellent practice opportunities with comprehensive compensation and benefits packages. Contact: Mark Peterson, Physician Recruiter, North Memorial Medical Center, 3300 Oakdale Ave. N., Robbinsdale, MN 55422. Telephone (763) 520-1336. E-mail: mark.peterson@northmemorial.com Website: www.northmemorial.com.

Maple Grove Urgent Care: Opportunity for physicians or physician assistants looking for part-time hours in busy urgent care clinic located in the growing northwest suburb of Maple Grove. Clinic hours are Monday through Friday 4:00 p.m. to 10:00 p.m., and Saturdays and Sundays 10:00 a.m. to 6:00 p.m. We are open all holidays and offer competitive pay. If you are interested or would like more information call Rick Leach, MD at 612-760-7161, or fax CV to 763-420-7938, or email with attachment to rdleach@aol.com.

A GREAT PLACE TO NUTURE A FAMILY-AND A FAMILY PRACTICE at Brainerd Lakes Health located in lakes area of Central Minnesota. We are seeking FPs to join our growing group. Call is 1:14 Four-day workweek. Brainerd Lakes Health is an integrated multi-specialty clinic and 162-bed, JCAHO, acute care hospital. We serve 150,000 in a 60 mile radius. We offer competitive compensation, benefits, and malpractice in an area that offers lakes, trees, golf course, fine dining, shopping, arts, and excellent schools all just minutes from work and home. Want more info? Contact Nancy Juntunen at 218-454-5800 or nancy.juntunen@sjmcmn.org AA/EOE.

Express HealthCare seeks part-time and casual family physicians to work in our State of Art Urgent Care facility. We offer a modern working environment utilizing an EMR, digital imaging and onsite automated prescription dispensing. We are located next to the National Sports Center in Blaine. We are open everyday from 10AM to 10PM. We offer competitive pay and flexible scheduling. Please contact Rick Leach, M.D. at RDLeach@AOL.com or call 612-760-7161.

Fairmont Medical Center—Mayo Health System in Fairmont, Minnesota is seeking Family Medicine physicians, (OB optional) and a Family Medicine physician for the Emergency Department. Call for FP is 1:13. We are a multi-specialty group offering an attractive benefit program and two-year salary guarantee with future production incentives. Our partnership with Mayo Health System allows us to consult with our colleagues at the renowned Mayo Clinic. FMC is totally integrated with physician practices, high-end diagnostics, 57-bed hospital and 40-resident nursing home. Fairmont is located 120 miles south of Minneapolis, MN. Contact Jeannie Green, 800-234-6141; green.jeannie@mayo.edu or www.fairmontmedicalcenter.org.

Allina Hospitals & Clinics is proud to be the first MN health care organization to earn the Davies Award, the industry's preeminent award from the Healthcare Information and Management Systems Society, with cutting-edge technology on our new electronic medical record system. As a not-for-profit family of hospitals, clinics and other care services, we are dedicated to meeting the lifelong health care needs of communities throughout Minnesota and western Wisconsin. Currently we are seeking BE/BC Family Physicians in the following Minnesota communities: Blaine, Brooklyn Park, Buffalo, Cokato, Cambridge, Coon Rapids, Cottage Grove, Eagan, Elk River, Faribault, Forest Lake, Hastings, Litchfield, Maple Grove, Mora, Northfield, Prior Lake, Ramsey, Richfield, Shakopee, St. Michael, and Woodbury, and these locations in Wisconsin: Prescott, and River Falls. Please contact us for more information or visit our website at www.allina.com. Allina Physician Recruitment Services, recruit@allina.com or 612-262-4560 / 1-800-248-4921. EOE.

Apple Valley Medical Clinic, a full service, independent family practice clinic serving the fast-growing south suburbs of the Twin Cities, has a fulltime opening for a BC/BE family physician. In addition to our family practice program with 14 family physicians, we operate a unique 24/7 urgent care program, occupational health services, and offer convenient on-site access to medical imaging (CT, MRI, US, X-Ray & Mammography) a pharmacy, physical therapy, and full array of medical specialties on our modern campus. Our practice is physician-owned and governed. Please e-mail your resume to aberry@applevalleymc.com or call Adam Berry, administrator, at 952-953-9285 for more information.

Wabasha Clinic—Mayo Health System seeks a BC/BE Family Medicine physician (with OB) to join our staff of nine family physicians, a general surgeon, and five midlevel providers. Call is 1:9. In addition to competitive compensation there is also a comprehensive benefit package provided including fully paid malpractice insurance and free CME at Mayo Clinic Rochester. Wabasha is a scenic community located on the banks of the Mississippi River. Our community of 3,000 residents has a variety of outdoor recreation opportunities in addition to great schools and affordable housing. For further information contact John Shonyo, shonyo.john@mayo.edu, or call 888.577.5660.

ER work: Immediate opening for board eligible/certified primary care and emergency medicine physicians with a **valid state medical license from any state**, current ACLS and ATLS certification, and ED experience. Successful candidates will provide coverage in a moderately high-volume (double-coverage) federal emergency department in Red Lake, Minnesota. This Opportunity Offers: Excellent Compensation, "A"-rated professional liability insurance, including tail coverage and Independent contractor status with flexible shifts. Please submit CV to: Richard Leach, MD, PO Box 425, Anoka, MN 55303.

To place an ad in the next 'Practice Opportunities' section, please email Kristie Thorson at ktorson@mafp.org. Information about deadline for submission and rates can be found online at www.mafp.org/classifieds/asp.

HealthEast[®] MEDICAL LABORATORY

A different way of thinking about your Laboratory needs. Any competent laboratory can meet your patients needs. HealthEast Medical Laboratory meets the needs of your patients *and* your staff.

- > Reputation for quality, commitment and service
- > Locally owned and operated which translates to improved specimen integrity, quick turn around time and access to highly qualified medical, technical and support professionals
- > Full service laboratory
- > Extensive continuing education and consulting programs
- > Reporting options for patient test results include fax, LabWorks software, or EMR/HER interfaces

We take the extra time and put in the extra effort. Call to find out how we can best meet your needs.

HealthEast Medical Laboratory
651-232-3500 | www.healtheast.org/hml



This issue of
Minnesota
Family Physician
is brought to
you through
the generous
support of
HealthEast
Medical
Laboratory.

MINNESOTA FAMILY PHYSICIAN

Minnesota Academy of Family Physicians
600 South Highway 169, Suite 1680
St. Louis Park, Minnesota 55426-1275
(952) 542-0130 • (800) 999-8198

Prsrt Std
U.S. Postage
PAID
Mpls, MN
Permit No.
3198



Please Recycle